


VERMONT ELECTRIC POWER COMPANY

LINE K42 - GEORGIA SUB TO HIGHGATE SUB

115KV REBUILD

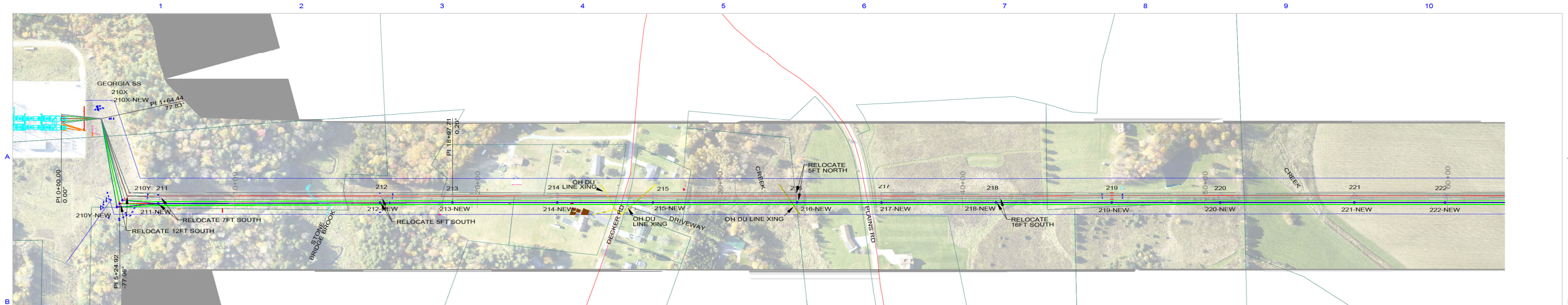
- 115KV CONDUCTOR: 1272 KCMIL 45/7 ACSR "BITTERN", DISPLAYED AT 266 DEG F, FINAL SAG
- - - - 115KV CONDUCTOR CLEARANCE LINE = 25.1FT (NESC + 5FT) AT 266 DEG F, FINAL SAG
- OPGW: INCAB 0.620IN 144 CT FIBER, DISPLAYED AT -20 DEG F, INITIAL
- 3/8 EHS 7 STRAND, DISPLAYED AT -20 DEG, INITIAL
- ADSS, AFL DNA 32763, DISPLAYED AT 32 DEG F, 0.5IN ICE, FINAL SAG
- - - - ADSS CLEARANCE LINE = 16FT (NESC + 0.5FT) AT 32 DEG F, 0.5IN ICE, FINAL SAG
- EXISTING 115KV CONDUCTOR WITHIN 15FT OF NEW CL: 1272 KCMIL 45/7 ACSR "BITTERN", DISPLAYED AT 212 DEG F, FINAL SAG
- EXISTING ADSS WITHIN 15FT OF NEW CL DISPLAYED AT 32 DEG F, 0.5IN ICE, FINAL SAG

DRAFT
 PRELIMINARY - FOR FILING PURPOSES ONLY
 THIS DRAWING IS PRELIMINARY AND NOT
 TO BE USED FOR CONSTRUCTION OR
 PROCUREMENT OF MATERIAL

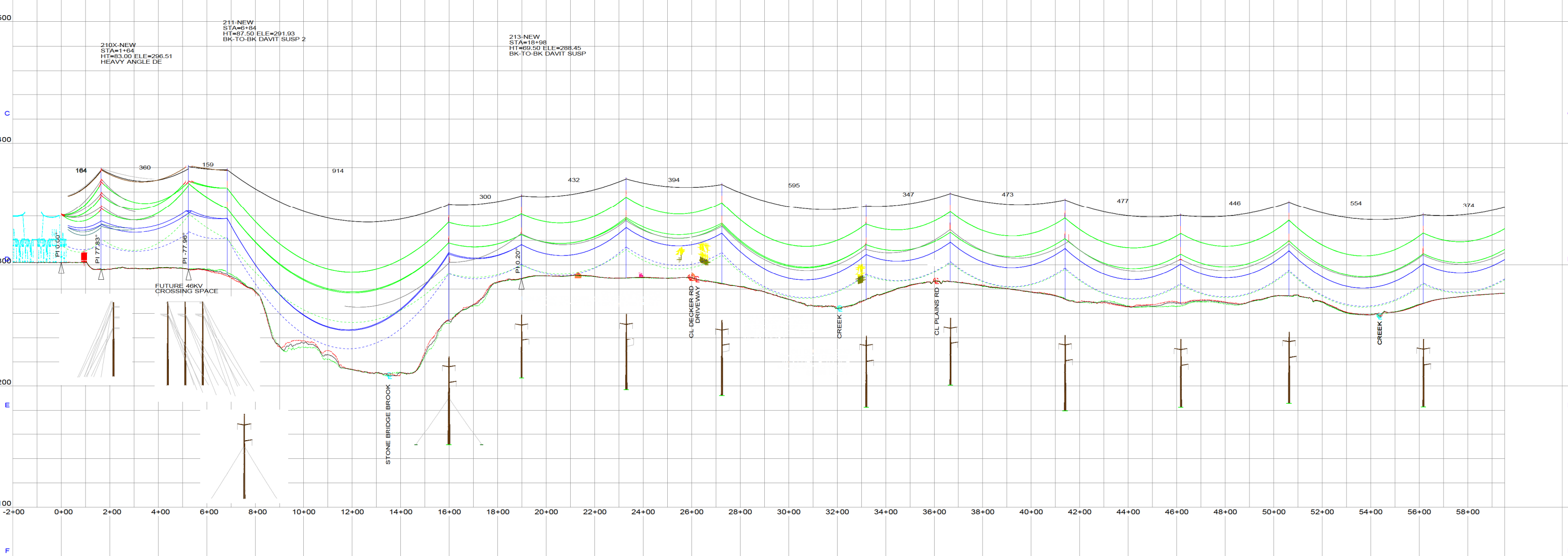
		VERMONT ELECTRIC POWER CO, INC. RUTLAND, VERMONT	
GEORGIA TO ST. ALBANS TO HIGHGATE			
K42			
115KV TRANSMISSION LINE			
SCALE: AS NOTED	DRAWN BY: GRBW	APPROVED BY:	
DATE: 5/31/2023	CHECKED BY:		DATE
DRAWING NUMBER:		K42 - P&P SHEET 1/16	
PLOT: A, 1=65		REV	A

REV	DATE	DR	CK	
A	5/31/23	GRW		ISSUED FOR FILING

FILE:F:\



GEORGIA SS STA=0+00 HT=54.00 ELE=301.73 STATION	210Y-NEW STA=5+26 HT=86.00 ELE=296.14 DA	212-NEW STA=16+08 HT=97.00 ELE=253.98 BK-TO-BK DAVIT SUSP 2	214-NEW STA=23+30 HT=83.00 ELE=289.00 BK-TO-BK DAVIT SUSP	215-NEW STA=27+24 HT=83.00 ELE=284.36 BK-TO-BK DAVIT SUSP	216-NEW STA=33+10 HT=78.50 ELE=271.21 BK-TO-BK DAVIT SUSP	217-NEW STA=36+66 HT=74.00 ELE=285.90 BK-TO-BK DAVIT SUSP	218-NEW STA=41+30 HT=83.00 ELE=271.72 BK-TO-BK DAVIT SUSP	219-NEW STA=46+16 HT=74.00 ELE=267.91 BK-TO-BK DAVIT SUSP	220-NEW STA=50+82 HT=78.50 ELE=274.35 BK-TO-BK DAVIT SUSP 2	221-NEW STA=56+16 HT=74.00 ELE=268.26 BK-TO-BK DAVIT SUSP
--	---	--	--	--	--	--	--	--	--	--



200.0 FT. HORIZ. SCALE
40.0 FT. VERT. SCALE
NORTH

DRAFT
PRELIMINARY - FOR FILING PURPOSES ONLY
THIS DRAWING IS PRELIMINARY AND NOT TO BE USED FOR CONSTRUCTION OR PROCUREMENT OF MATERIAL

NOTE: HEIGHT AND ELEVATION DATA FROM ALIGNMENT CENTERLINE, NOT POLE LOCATION.

OPGW, GEORGIA SS - 210X-NEW, 1KV, OPGW S 144U (3X48) 15.8MM 118KA2-S 82KN 1-917 1015LB.WIR, RULING SPAN 164 (FT), DISPLAYED -20 DEG F INITIAL FE	OHGW, GEORGIA SS - 210X-NEW, 1KV, 3 8-7 STRAND EHS STEEL 780LB.WIR, RULING SPAN 164 (FT), DISPLAYED -20 DEG F INITIAL FE	K42-NEW, GEORGIA SS - 210X-NEW, 116KV, BITTERN ACSR 1700LB.WIR, RULING SPAN 163 (FT), 3 PHASES, BUNDLE OF 2, DISPLAYED MOT (HTC-573FT RS) MAX SAG FE	COMMUNICATION WIRES, GEORGIA SS - 210X-NEW, 1KV, DNA-32763 900LB.WIR, RULING SPAN 165 (FT), 2 PHASES, DISPLAYED 32 DEG F 1/2" ICE MAX SAG 608 (LBS)	OPGW, 210X-NEW - 210Y-NEW, 1KV, OPGW S 144U (3X48) 15.8MM 118KA2-S 82KN 1-917 2175LB.WIR, RULING SPAN 371 (FT), DISPLAYED -20 DEG F INITIAL FE	OHGW, 210X-NEW - 210Y-NEW, 1KV, 3 8-7 STRAND EHS STEEL 1490LB.WIR, RULING SPAN 348 (FT), DISPLAYED -20 DEG F INITIAL FE	K42-NEW, 210X-NEW - 210Y-NEW, 116KV, BITTERN ACSR 3500LB.WIR, RULING SPAN 359 (FT), 3 PHASES, BUNDLE OF 2, DISPLAYED MOT (HTC-573FT RS) MAX SAG FE	COMMUNICATION WIRES, 210X-NEW - 210Y-NEW, 1KV, DNA-32763.WIR, RULING SPAN 348 (FT), DISPLAYED 32 DEG F 1/2" ICE MAX SAG 1390 (LBS)	OPGW, 210Y-NEW - 211-NEW, 1KV, OPGW S 144U (3X48) 15.8MM 118KA2-S 82KN 1-917 4160LB.WIR, RULING SPAN 528 (FT), DISPLAYED -20 DEG F INITIAL FE	OHGW, 210Y-NEW - 211-NEW, 1KV, 3 8-7 STRAND EHS STEEL 1820LB.WIR, RULING SPAN 147 (FT), DISPLAYED -20 DEG F INITIAL FE	K42-NEW, 210Y-NEW - 211-NEW, 116KV, BITTERN ACSR.WIR, RULING SPAN 528 (FT), 3 PHASES, BUNDLE OF 2, DISPLAYED MOT (HTC-573FT RS) MAX SAG FE	COMMUNICATION WIRES, 210Y-NEW - 212-NEW, 1KV, DNA-32763.WIR, RULING SPAN 460 (FT), 2 PHASES, DISPLAYED 32 DEG F 1/2" ICE MAX SAG 1362 (LBS)
--	--	--	---	--	---	--	--	---	--	--	---

VERMONT ELECTRIC POWER CO., INC.
RUTLAND, VERMONT

GEORGIA TO ST. ALBANS TO HIGHGATE

K42

115KV TRANSMISSION LINE

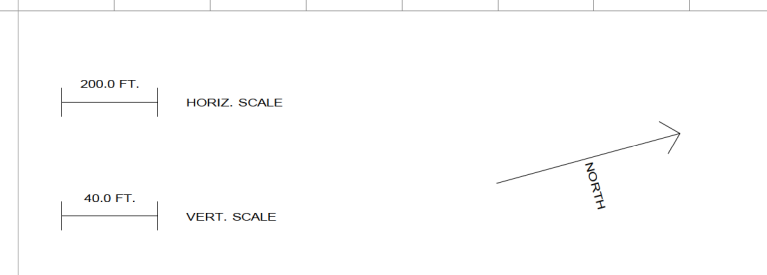
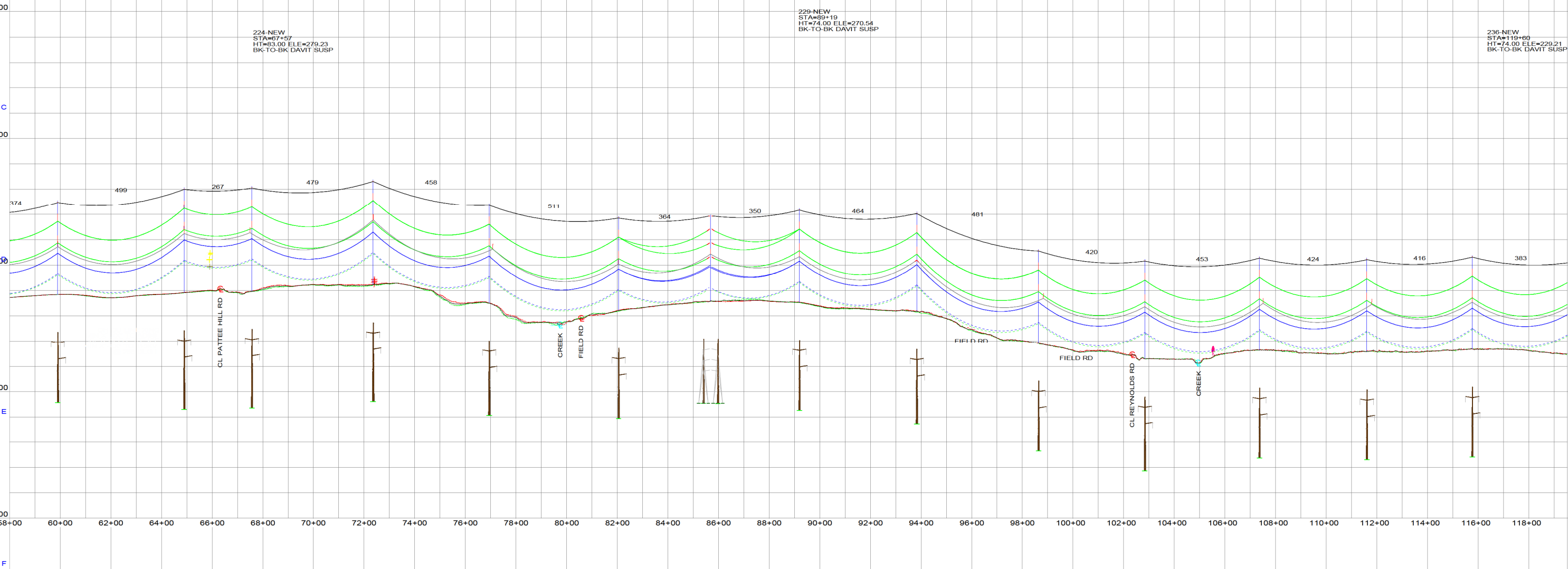
SCALE: AS NOTED	DRAWN BY: GRBW	APPROVED BY:
DATE: 5/31/2023	CHECKED BY:	DATE:
DRAWING NUMBER:	K42 - P&P SHEET 2/16	
PLOT: A, 1=65	REV	FILE: A

REV	DATE	DR	CK
A	5/31/23	GRW	
ISSUED FOR FILING			



222-NEW STA=53+00 HT=74.00 ELE=276.75 BK-TO-BK DAVIT SUSP	223-NEW STA=54+80 HT=83.00 ELE=278.21 BK-TO-BK DAVIT SUSP	224-NEW STA=72+35 HT=83.00 ELE=284.37 BK-TO-BK DAVIT SUSP 2	225-NEW STA=76+04 HT=78.50 ELE=269.97 BK-TO-BK DAVIT SUSP	226-NEW STA=80+05 HT=74.20 ELE=264.06 OFFSET ADJUST=2.90 BK-TO-BK DAVIT SUSP	227-NEW STA=86+80 HT=67.89 ELE=271.54 2-POLE IN-LINE DE	228-NEW STA=90+83 HT=78.50 ELE=263.31 BK-TO-BK DAVIT SUSP 2	229-NEW STA=98+63 HT=74.00 ELE=238.29 BK-TO-BK DAVIT SUSP	230-NEW STA=102+83 HT=78.50 ELE=225.86 BK-TO-BK DAVIT SUSP	231-NEW STA=107+36 HT=74.00 ELE=232.65 BK-TO-BK DAVIT SUSP	232-NEW STA=111+60 HT=74.00 ELE=231.45 BK-TO-BK DAVIT SUSP	233-NEW STA=115+77 HT=74.00 ELE=233.50 BK-TO-BK DAVIT SUSP	234-NEW STA=119+80 HT=74.00 ELE=229.21 BK-TO-BK DAVIT SUSP
--	--	--	--	--	--	--	--	---	---	---	---	---

224-NEW STA=67+57 HT=83.00 ELE=279.23 BK-TO-BK DAVIT SUSP	229-NEW STA=89+19 HT=74.00 ELE=270.54 BK-TO-BK DAVIT SUSP	236-NEW STA=119+80 HT=74.00 ELE=229.21 BK-TO-BK DAVIT SUSP
--	--	---



DRAFT
PRELIMINARY - FOR FILING PURPOSES ONLY
THIS DRAWING IS PRELIMINARY AND NOT
TO BE USED FOR CONSTRUCTION OR
PROCUREMENT OF MATERIAL

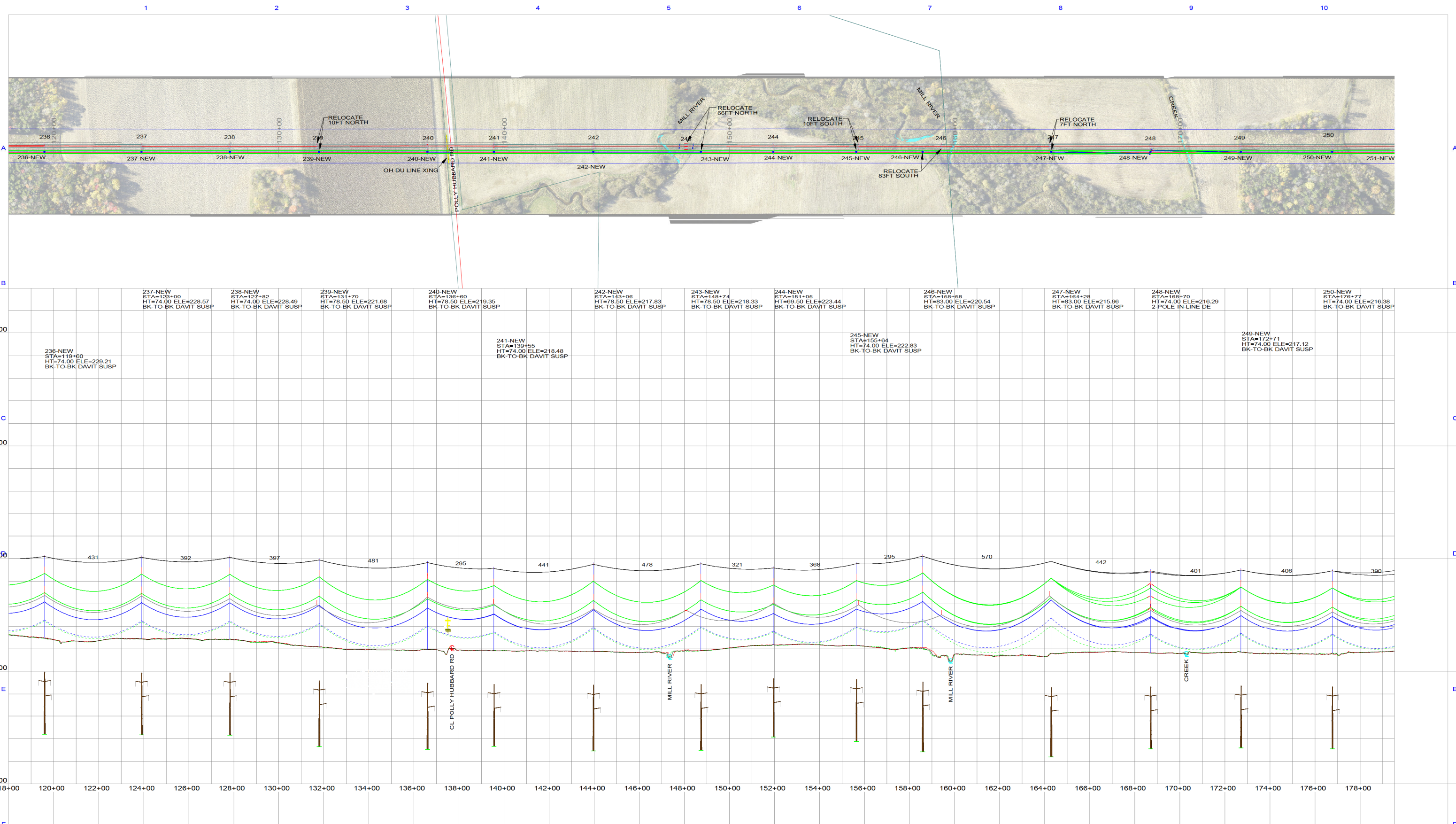
NOTE: HEIGHT AND ELEVATION DATA FROM ALIGNMENT CENTERLINE, NOT POLE LOCATION.

OPGW, 210Y-NEW - 228-NEW, 1KV, OPGW S 144U (3X48) 15.8MM 118KA2-S 82KN 1-917 4160LB.WIR, RULING SPAN 528 (FT), DISPLAYED -20 DEG F INITIAL FE
K42-NEW, 210Y-NEW - 228-NEW, 110KV, BITTERN ACSR.WIR, RULING SPAN 528 (FT), 3 PHASES, BUNDLE OF 2, DISPLAYED MOT (HTC-573FT RS) MAX SAG FE
COMMUNICATION WIRES, 212-NEW - 228-NEW, 1KV, DNA-32763.WIR, RULING SPAN 480 (FT), 2 PHASES, DISPLAYED 32 DEG F 1/2" ICE MAX SAG 1362 (LBS)
OPGW, 228-NEW - 253-NEW, 1KV, OPGW S 144U (3X48) 15.8MM 118KA2-S 82KN 1-917 3875LB.WIR, RULING SPAN 428 (FT), DISPLAYED -20 DEG F INITIAL FE
K42-NEW, 228-NEW - 253-NEW, 110KV, BITTERN ACSR.WIR, RULING SPAN 428 (FT), 3 PHASES, BUNDLE OF 2, DISPLAYED MOT (HTC-573FT RS) MAX SAG FE
COMMUNICATION WIRES, 228-NEW - 241-NEW, 1KV, DNA-32763.WIR, RULING SPAN 423 (FT), 2 PHASES, DISPLAYED 32 DEG F 1/2" ICE MAX SAG 1330 (LBS)

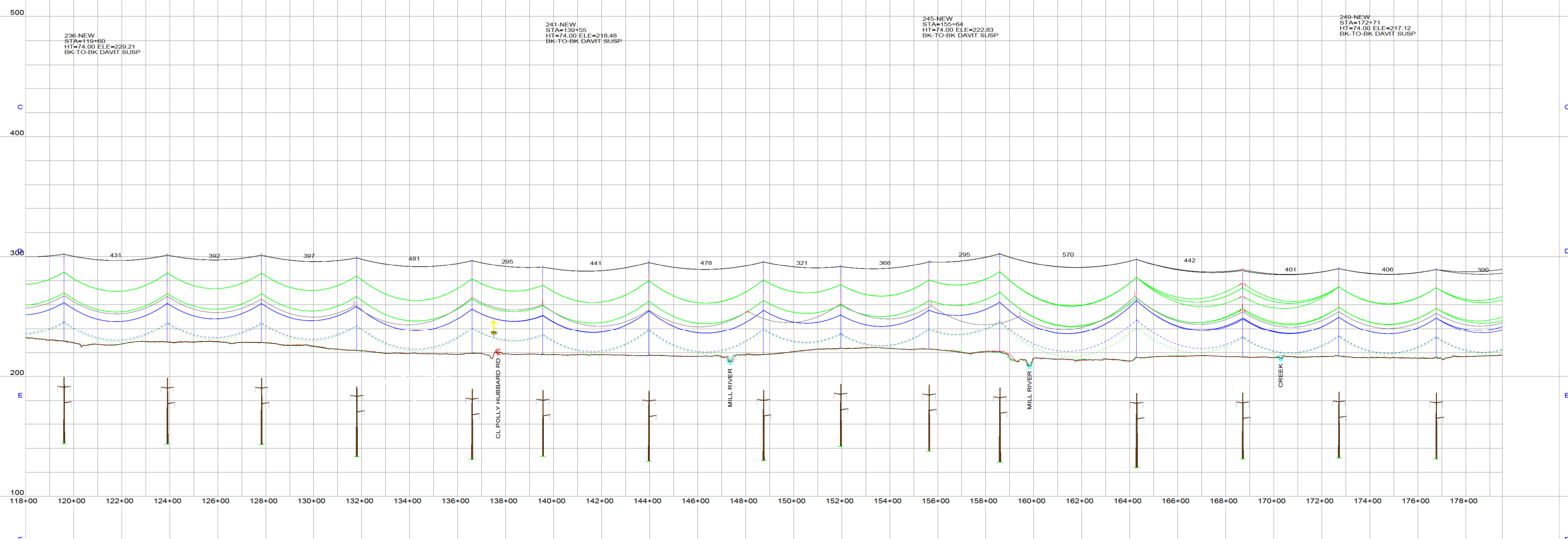
REV	DATE	DR	CK
A	5/31/23	GRW	
			ISSUED FOR FILING

	VERMONT ELECTRIC POWER CO., INC. RUTLAND, VERMONT GEORGIA TO ST. ALBANS TO HIGHGATE	
	K42 115KV TRANSMISSION LINE	
SCALE: AS NOTED	DRAWN BY: GRBW	APPROVED BY:
DATE: 5/31/2023	CHECKED BY:	DATE:
DRAWING NUMBER:	A	
PLOT: A, 1=65	REV	

K42 - P&P SHEET 3/16



237-NEW STA=123+00 HT=74.00 ELE=228.57 BK-TO-BK DAVIT SUSP	238-NEW STA=127+82 HT=74.00 ELE=228.49 BK-TO-BK DAVIT SUSP	239-NEW STA=131+70 HT=78.50 ELE=221.68 BK-TO-BK DAVIT SUSP	240-NEW STA=136+80 HT=78.50 ELE=219.35 BK-TO-BK DAVIT SUSP	242-NEW STA=143+06 HT=78.50 ELE=217.83 BK-TO-BK DAVIT SUSP	243-NEW STA=148+74 HT=78.50 ELE=218.33 BK-TO-BK DAVIT SUSP	244-NEW STA=161+05 HT=69.50 ELE=223.44 BK-TO-BK DAVIT SUSP	246-NEW STA=168+58 HT=83.00 ELE=220.54 BK-TO-BK DAVIT SUSP	247-NEW STA=164+28 HT=83.00 ELE=215.86 BK-TO-BK DAVIT SUSP	248-NEW STA=168+70 HT=74.00 ELE=216.29 2-POLE IN-LINE DE	250-NEW STA=176+77 HT=74.00 ELE=216.38 BK-TO-BK DAVIT SUSP
---	---	---	---	---	---	---	---	---	---	---



DRAFT
PRELIMINARY - FOR FILING PURPOSES ONLY
THIS DRAWING IS PRELIMINARY AND NOT
TO BE USED FOR CONSTRUCTION OR
PROCUREMENT OF MATERIAL

NOTE: HEIGHT AND ELEVATION DATA FROM ALIGNMENT CENTERLINE, NOT POLE LOCATION.

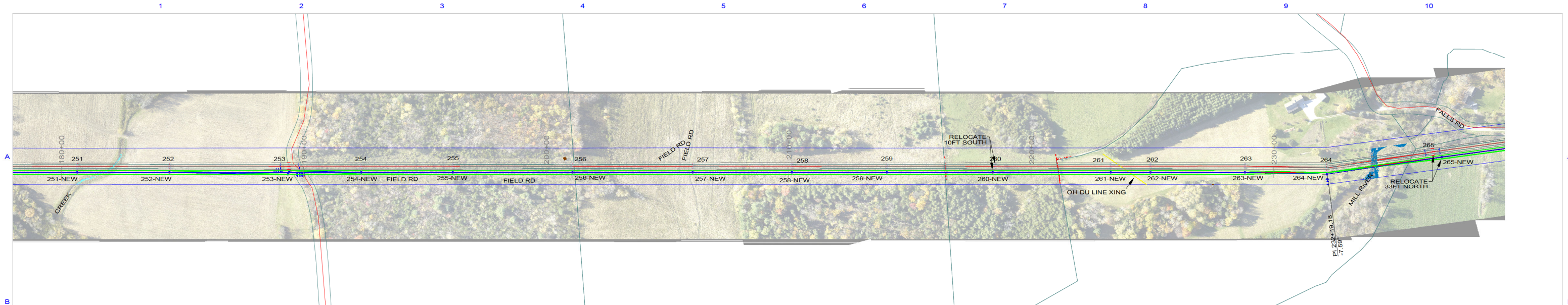
OPGW, 228-NEW - 253-NEW, 1KV, OPGW S 144U (3X48) 15.8MM 118KA2-S 82KN 1-917_3875LB.WIR, RULING SPAN 428 (FT), DISPLAYED -20 DEG F INITIAL FE
K42-NEW, 228-NEW - 253-NEW, 110KV, BITTERN, ACSR.WIR, RULING SPAN 428 (FT), 3 PHASES, BUNDLE OF 2, DISPLAYED MOT (HTC-573FT RS) MAX SAG FE
COMMUNICATION WIRES, 228-NEW - 241-NEW, 1KV, DNA-32763.WIR, RULING SPAN 423 (FT), 2 PHASES, DISPLAYED 32 DEG F 1/2" ICE MAX SAG 1330 (LBS)
COMMUNICATION WIRES, 241-NEW - 253-NEW, 1KV, DNA-32763.WIR, RULING SPAN 434 (FT), 2 PHASES, DISPLAYED 32 DEG F 1/2" ICE MAX SAG 1321 (LBS)

REV	DATE	DR	CK
A	5/31/23	GRW	

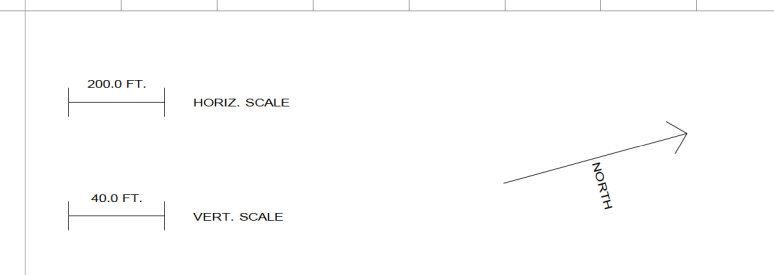
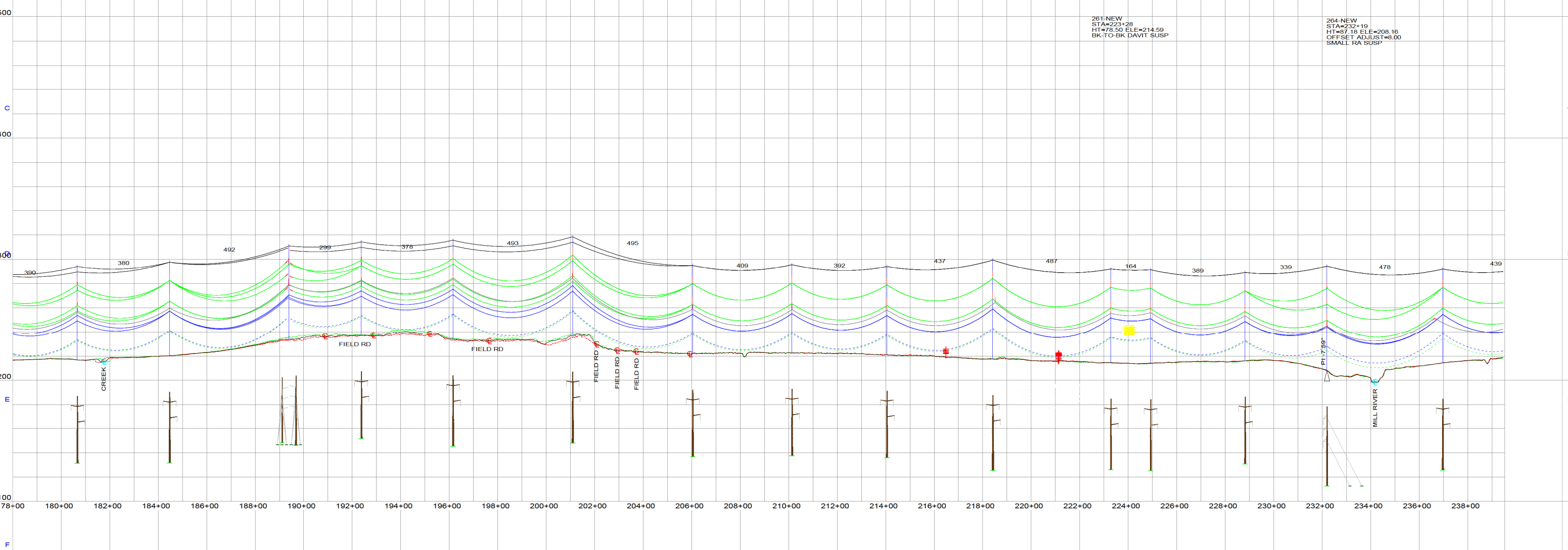
VELCO VERMONT ELECTRIC POWER CO., INC.
 RUTLAND, VERMONT
 GEORGIA TO ST. ALBANS TO HIGHGATE

K42
115KV TRANSMISSION LINE

SCALE: AS NOTED DRAWN BY: GRBW APPROVED BY: []
 DATE: 5/31/2023 CHECKED BY: [] DATE: []
 DRAWING NUMBER: [] A
 PLOT: A, 1=65 **K42 - P&P SHEET 4/16** REV [] FILE: A



251-NEW STA=180+66 HT=74.00 ELE=216.71 BK-TO-BK DAVIT SUSP	252-NEW STA=184+47 HT=78.50 ELE=220.23 BK-TO-BK DAVIT SUSP	253-NEW STA=189+30 HT=76.23 ELE=233.62 BK-TO-BK DAVIT SUSP	254-NEW STA=193+37 HT=74.00 ELE=236.93 BK-TO-BK DAVIT SUSP	255-NEW STA=198+15 HT=78.50 ELE=233.77 BK-TO-BK DAVIT SUSP	256-NEW STA=201+00 HT=78.50 ELE=236.68 BK-TO-BK DAVIT SUSP 2	257-NEW STA=206+04 HT=74.00 ELE=222.07 BK-TO-BK DAVIT SUSP	258-NEW STA=210+13 HT=74.00 ELE=222.69 BK-TO-BK DAVIT SUSP	259-NEW STA=214+05 HT=74.00 ELE=221.14 BK-TO-BK DAVIT SUSP	260-NEW STA=218+41 HT=83.00 ELE=217.52 BK-TO-BK DAVIT SUSP	262-NEW STA=234+02 HT=78.50 ELE=214.02 BK-TO-BK DAVIT SUSP	263-NEW STA=238+81 HT=74.00 ELE=216.18 BK-TO-BK DAVIT SUSP	265-NEW STA=236+06 HT=78.50 ELE=214.53 BK-TO-BK DAVIT SUSP
---	---	---	---	---	---	---	---	---	---	---	---	---



DRAFT
PRELIMINARY - FOR FILING PURPOSES ONLY
THIS DRAWING IS PRELIMINARY AND NOT
TO BE USED FOR CONSTRUCTION OR
PROCUREMENT OF MATERIAL

NOTE: HEIGHT AND ELEVATION DATA FROM ALIGNMENT CENTERLINE, NOT POLE LOCATION.

OPGW, 228-NEW - 253-NEW, 1KV, OPGW S 144U (3X48) 15.8MM 118KA2-S 82KN 1-917_3875LB.WIR, RULING SPAN 428 (FT), DISPLAYED -20 DEG F INITIAL FE
K42-NEW, 228-NEW - 253-NEW, 110KV, BITTERN, ACSR.WIR, RULING SPAN 428 (FT), 3 PHASES, BUNDLE OF 2, DISPLAYED MOT (HTC-573FT RS) MAX SAG FE
COMMUNICATION WIRES, 241-NEW - 253-NEW, 1KV, DNA-32763.WIR, RULING SPAN 434 (FT), 2 PHASES, DISPLAYED 32 DEG F 1/2" ICE MAX SAG 1321 (LBS)
OPGW, 253-NEW - 270-NEW, 1KV, OPGW S 144U (3X48) 15.8MM 118KA2-S 82KN 1-917_3890LB.WIR, RULING SPAN 432 (FT), DISPLAYED -20 DEG F INITIAL FE
K42-NEW, 253-NEW - 270-NEW, 110KV, BITTERN, ACSR.WIR, RULING SPAN 431 (FT), 3 PHASES, BUNDLE OF 2, DISPLAYED MOT (HTC-573FT RS) MAX SAG FE
COMMUNICATION WIRES, 253-NEW - 267-NEW, 1KV, DNA-32763.WIR, RULING SPAN 420 (FT), 2 PHASES, DISPLAYED 32 DEG F 1/2" ICE MAX SAG 1323 (LBS)

REV	DATE	DR	CK
A	5/31/23	GRW	
ISSUED FOR FILING			

VERMONT ELECTRIC POWER CO., INC.
 RUTLAND, VERMONT
 GEORGIA TO ST. ALBANS TO HIGHGATE

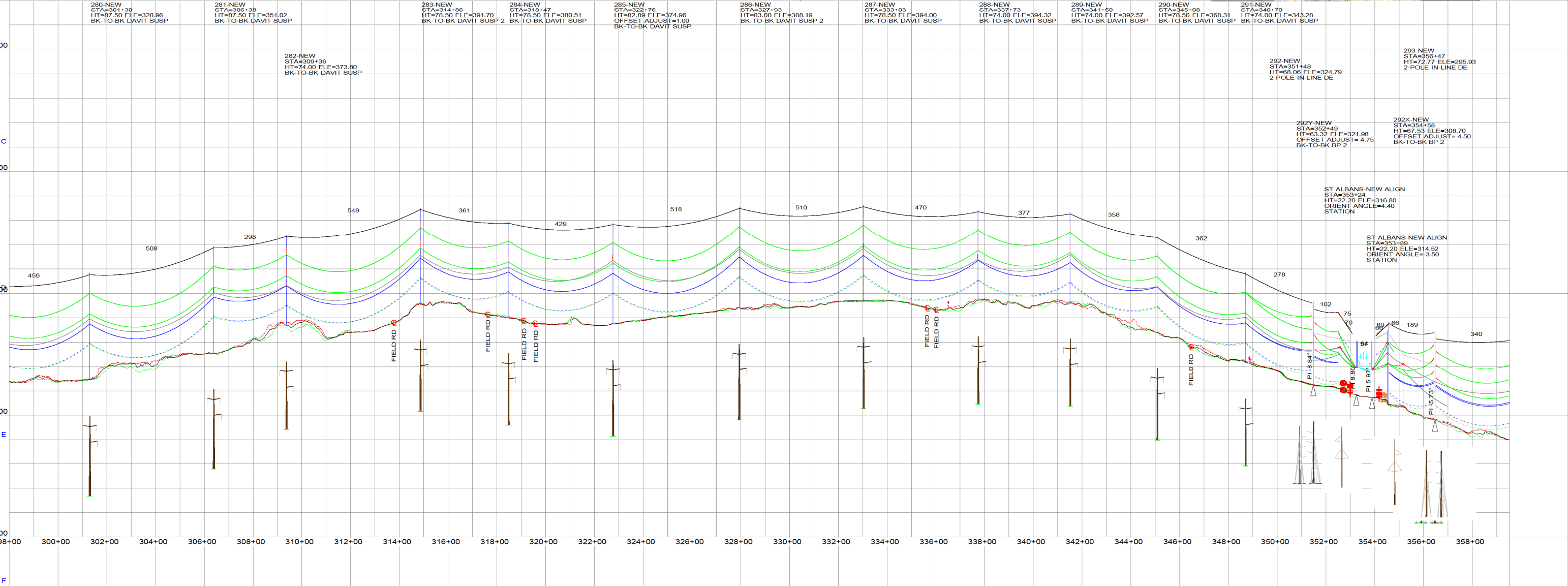
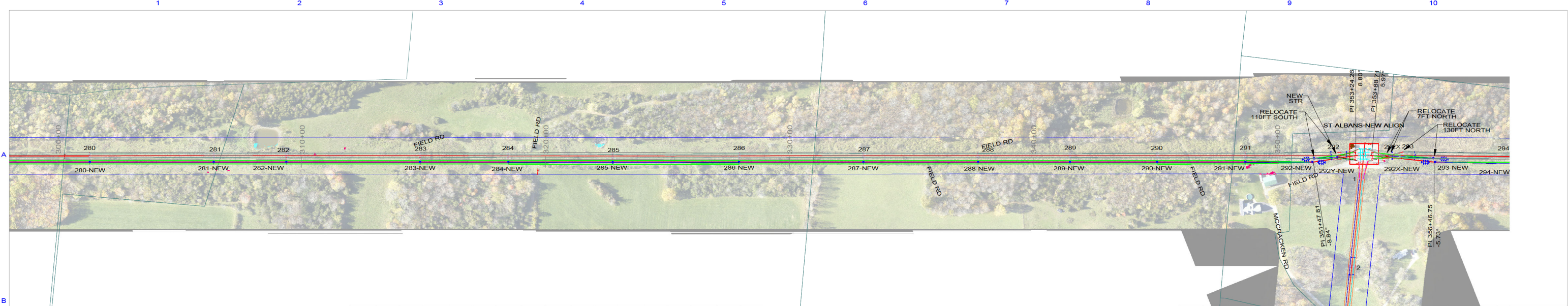
K42
115KV TRANSMISSION LINE

SCALE: AS NOTED DRAWN BY: GRBW APPROVED BY: _____

DATE: 5/31/2023 CHECKED BY: _____ DATE: _____

DRAWING NUMBER: _____ A

PLOT: A, 1=65 **K42 - P&P SHEET 5/16** REV



DRAFT PRELIMINARY - FOR FILING PURPOSES ONLY THIS DRAWING IS PRELIMINARY AND NOT TO BE USED FOR CONSTRUCTION OR PROCUREMENT OF MATERIAL

NOTE: HEIGHT AND ELEVATION DATA FROM ALIGNMENT CENTERLINE, NOT POLE LOCATION.

200.0 FT. HORIZ. SCALE
40.0 FT. VERT. SCALE

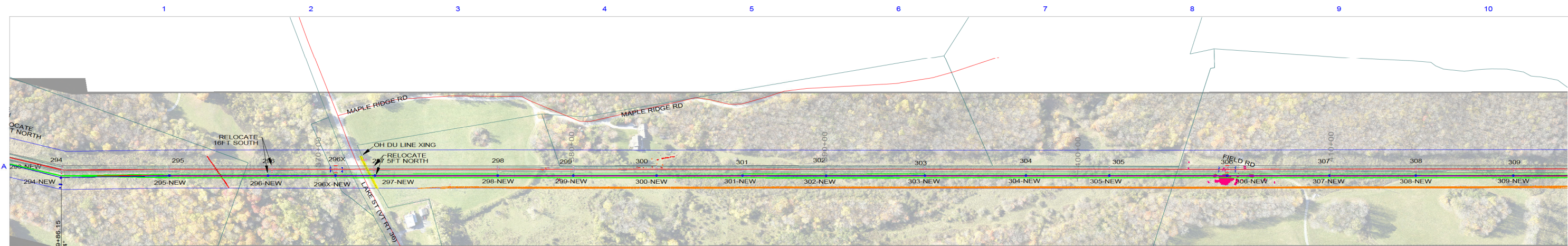
NORTH

OPGW, 270-NEW - 292-NEW, 1KV, OPGW S 144U (3X48) 15.8MM 118KA2-S 82KN 1-917, 3925LB.WIR, RULING SPAN 445 (FT), DISPLAYED -20 DEG F INITIAL FE					
K42-NEW, 270-NEW - 292-NEW, 110KV, BITTERN, ACSR.WIR, RULING SPAN 445 (FT), 3 PHASES, BUNDLE OF 2, DISPLAYED MOT (HTC-573FT RS) MAX SAG FE					
COMMUNICATION WIRES, 270-NEW - 292-NEW, 1KV, DNA-32763.WIR, RULING SPAN 445 (FT), 2 PHASES, DISPLAYED 32 DEG F 1/2" ICE MAX SAG 1319 (LBS)					
OPGW, 292-NEW - 292Y-NEW, 1KV, OPGW S 144U (3X48) 15.8MM 118KA2-S 82KN 1-917, 1150LB.WIR, RULING SPAN 96 (FT), DISPLAYED -20 DEG F INITIAL FE					
K42-NEW, 292-NEW - ST ALBANS-NEW ALIGN, 110KV, BITTERN, ACSR, 2500LB.WIR, RULING SPAN 96 (FT), 3 PHASES, BUNDLE OF 2, DISPLAYED MOT (HTC-573FT RS) MAX SAG FE					
COMMUNICATION WIRES, 292-NEW - 292Y-NEW, 1KV, DNA-32763, 900LB.WIR, RULING SPAN 96 (FT), 2 PHASES, DISPLAYED 32 DEG F 1/2" ICE MAX SAG 636 (LBS)					
OPGW, 292Y-NEW - ST ALBANS-NEW ALIGN, 1KV, OPGW S 144U (3X48) 15.8MM 118KA2-S 82KN 1-917, 1550LB.WIR, RULING SPAN 81 (FT), DISPLAYED -20 DEG F INITIAL FE					
OPGW, 292Y-NEW - ST ALBANS-NEW ALIGN, 1KV, 3-87, STRAND, EHS, STEEL, 1100LB.WIR, RULING SPAN 91 (FT), DISPLAYED -20 DEG F INITIAL FE					
OPGW, ST ALBANS-NEW ALIGN - 292X-NEW, 1KV, OPGW S 144U (3X48) 15.8MM 118KA2-S 82KN 1-917, 1830LB.WIR, RULING SPAN 94 (FT), DISPLAYED -20 DEG F INITIAL FE					
OPGW, ST ALBANS-NEW ALIGN - 292X-NEW, 1KV, 3-87, STRAND, EHS, STEEL, 1300LB.WIR, RULING SPAN 94 (FT), DISPLAYED -20 DEG F INITIAL FE					
K42-NEW, ST ALBANS-NEW ALIGN - 293-NEW, 118KV, BITTERN, ACSR, 2500LB.WIR, RULING SPAN 161 (FT), 3 PHASES, BUNDLE OF 2, DISPLAYED MOT (HTC-573FT RS) MAX SAG FE					
OPGW, 292X-NEW - 293-NEW, 1KV, OPGW S 144U (3X48) 15.8MM 118KA2-S 82KN 1-917, 1360LB.WIR, RULING SPAN 183 (FT), DISPLAYED -20 DEG F INITIAL FE					
COMMUNICATION WIRES, 292X-NEW - 293-NEW, 1KV, DNA-32763, 900LB.WIR, RULING SPAN 183 (FT), 2 PHASES, DISPLAYED 32 DEG F 1/2" ICE MAX SAG 597 (LBS)					
OPGW, 293-NEW - 315-NEW, 1KV, OPGW S 144U (3X48) 15.8MM 118KA2-S 82KN 1-917, 3850LB.WIR, RULING SPAN 400 (FT), DISPLAYED -20 DEG F INITIAL FE					
K42-NEW, 293-NEW - 315-NEW, 118KV, BITTERN, ACSR.WIR, RULING SPAN 400 (FT), 3 PHASES, BUNDLE OF 2, DISPLAYED MOT (HTC-573FT RS) MAX SAG FE					
COMMUNICATION WIRES, 293-NEW - 309-NEW, 1KV, DNA-32763.WIR, RULING SPAN 378 (FT), 2 PHASES, DISPLAYED 32 DEG F 1/2" ICE MAX SAG 1311 (LBS)					

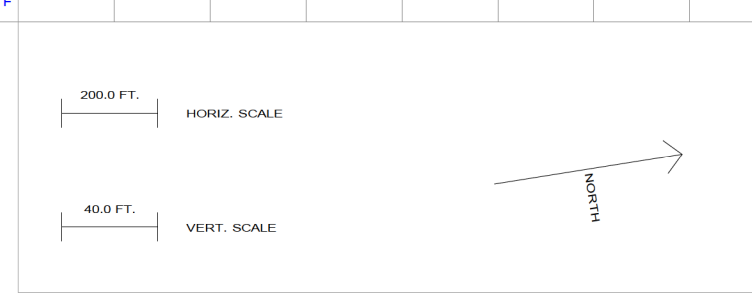
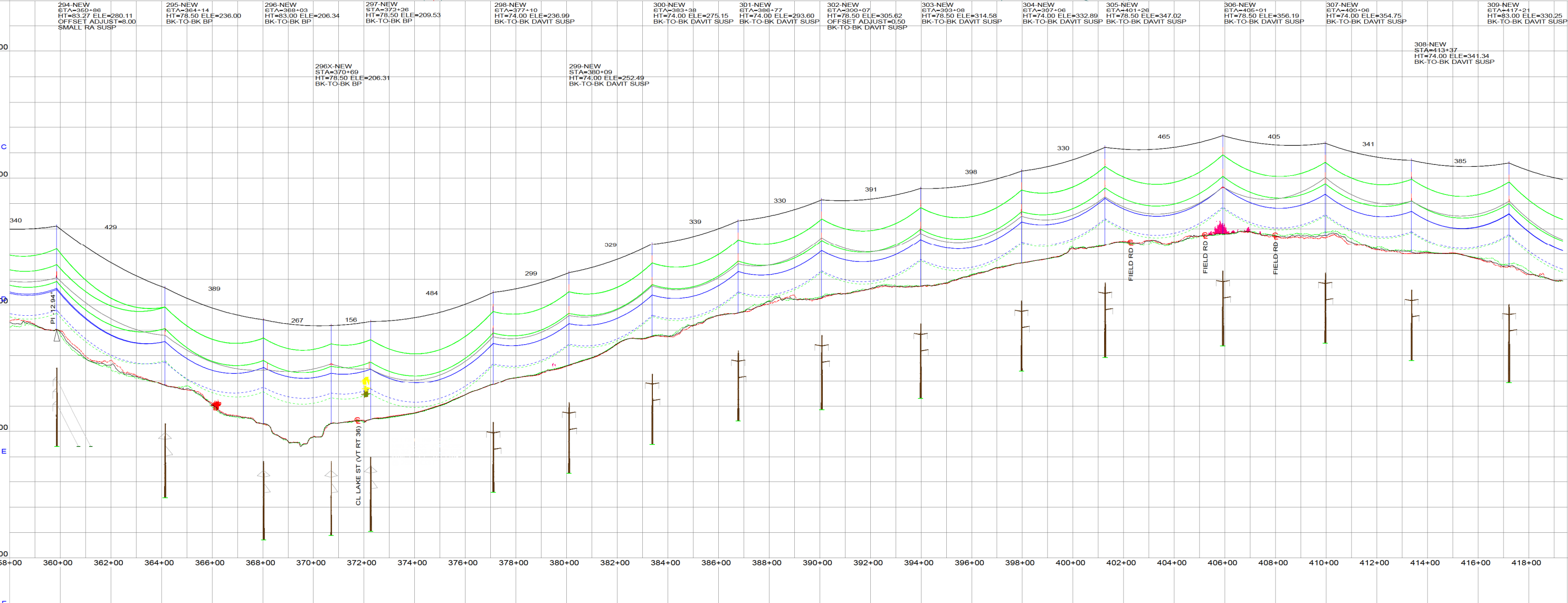
VERMONT ELECTRIC POWER CO., INC.
RUTLAND, VERMONT
GEORGIA TO ST. ALBANS TO HIGHGATE
K42
115KV TRANSMISSION LINE

SCALE: AS NOTED DRAWN BY: GRBW APPROVED BY: []
DATE: 5/31/2023 CHECKED BY: [] DATE: []
DRAWING NUMBER: [] A REV: []
PLOT: A, 1=65 **K42 - P&P SHEET 7/16** FILE: []

REV	DATE	DR	CK
A	5/31/23	GRW	
			ISSUED FOR FILING



294-NEW STA=350+86 HT=83.27 ELE=280.11 OFFSET ADJUST=8.00 SMALL RA SUSP	295-NEW STA=364+14 HT=78.50 ELE=236.00 BK-TO-BK BP	296-NEW STA=368+03 HT=83.00 ELE=206.34 BK-TO-BK BP	297-NEW STA=372+26 HT=78.50 ELE=209.53 BK-TO-BK BP	298-NEW STA=377+10 HT=74.00 ELE=236.99 BK-TO-BK DAVIT SUSP	299-NEW STA=380+09 HT=74.00 ELE=252.49 BK-TO-BK DAVIT SUSP	300-NEW STA=383+38 HT=74.00 ELE=275.15 BK-TO-BK DAVIT SUSP	301-NEW STA=386+77 HT=74.00 ELE=293.60 BK-TO-BK DAVIT SUSP	302-NEW STA=390+07 HT=78.50 ELE=305.62 OFFSET ADJUST=0.50 BK-TO-BK DAVIT SUSP	303-NEW STA=393+08 HT=78.50 ELE=314.58 BK-TO-BK DAVIT SUSP	304-NEW STA=397+06 HT=74.00 ELE=332.89 BK-TO-BK DAVIT SUSP	305-NEW STA=401+26 HT=78.50 ELE=347.02 BK-TO-BK DAVIT SUSP	306-NEW STA=405+01 HT=78.50 ELE=356.19 BK-TO-BK DAVIT SUSP	307-NEW STA=408+06 HT=74.00 ELE=354.75 BK-TO-BK DAVIT SUSP	308-NEW STA=411+21 HT=83.00 ELE=330.25 BK-TO-BK DAVIT SUSP	309-NEW STA=413+37 HT=74.00 ELE=341.34 BK-TO-BK DAVIT SUSP
---	---	---	---	---	---	---	---	---	---	---	---	---	---	---	---



DRAFT
PRELIMINARY - FOR FILING PURPOSES ONLY
 THIS DRAWING IS PRELIMINARY AND NOT
 TO BE USED FOR CONSTRUCTION OR
 PROCUREMENT OF MATERIAL

NOTE: HEIGHT AND ELEVATION DATA FROM ALIGNMENT
 CENTERLINE, NOT POLE LOCATION.

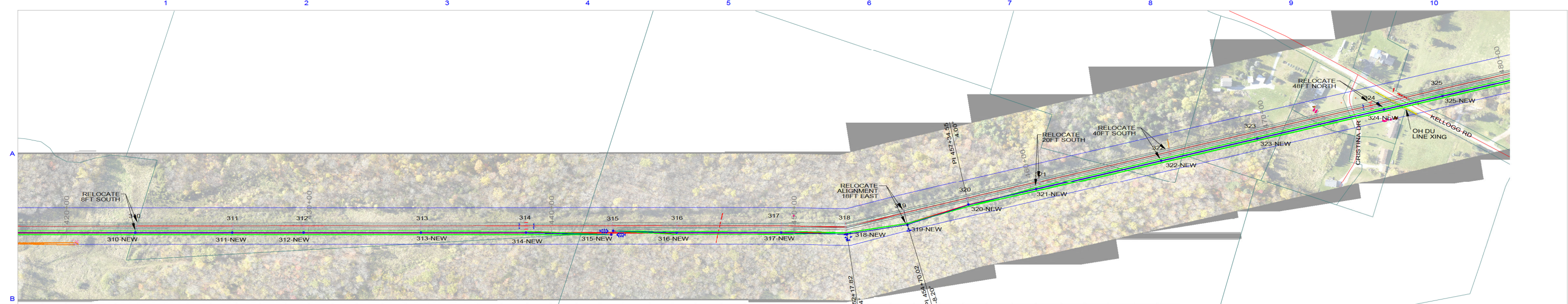
OPGW, 293-NEW - 315-NEW, 1KV, OPGW S 144U (3X48) 15.8MM 118KA2-S 82KN 1-917_3850LB.WIR, RULING SPAN 400 (FT), DISPLAYED -20 DEG F INITIAL FE
K42-NEW, 293-NEW - 315-NEW, 110KV, BITTERN, ACSR.WIR, RULING SPAN 400 (FT), 3 PHASES, BUNDLE OF 2, DISPLAYED MOT (HTC-573 FT RS) MAX SAG FE
COMMUNICATION WIRES, 293-NEW - 308-NEW, 1KV, DNA-32763.WIR, RULING SPAN 378 (FT), 2 PHASES, DISPLAYED 32 DEG F 1/2" ICE MAX SAG 1311 (LBS)
COMMUNICATION WIRES, 309-NEW - 315-NEW, 1KV, DNA-32763.WIR, RULING SPAN 447 (FT), 2 PHASES, DISPLAYED 32 DEG F 1/2" ICE MAX SAG 1381 (LBS)

REV	DATE	DR	CK
A	5/31/23	GRW	
			ISSUED FOR FILING

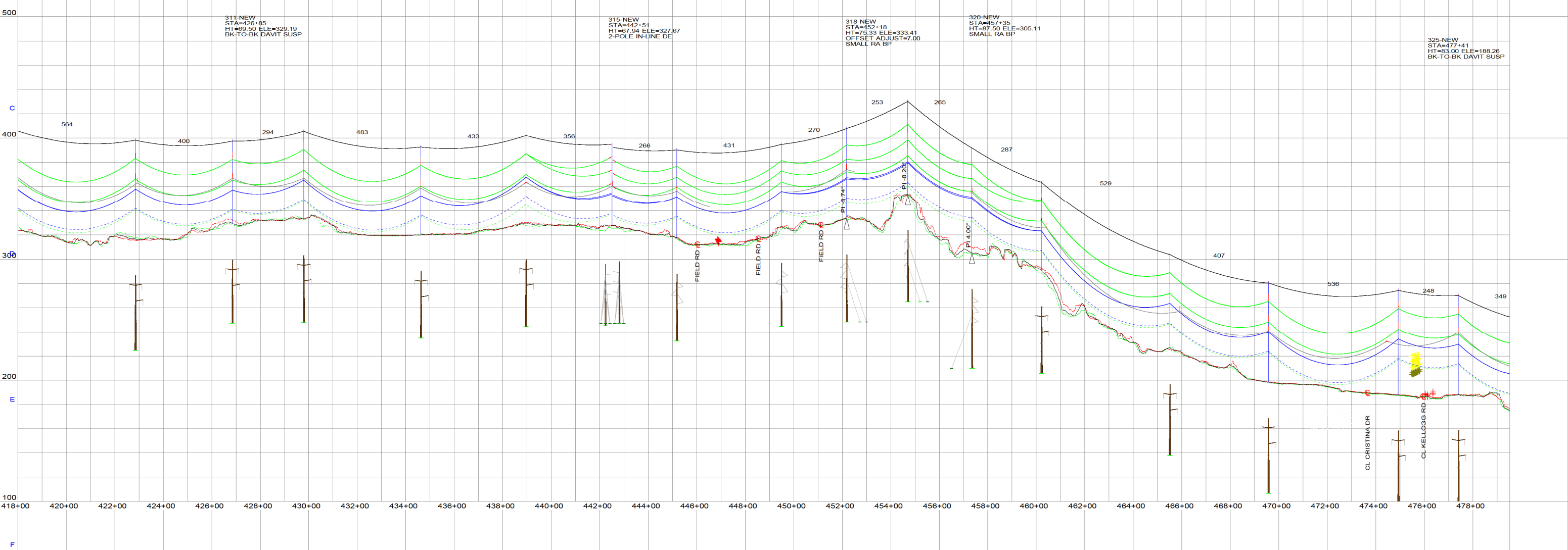
VELCO VERMONT ELECTRIC POWER CO., INC.
 RUTLAND, VERMONT
 GEORGIA TO ST. ALBANS TO HIGHGATE

K42
115KV TRANSMISSION LINE

SCALE: AS NOTED DRAWN BY: GRBW APPROVED BY: []
 DATE: 5/31/2023 CHECKED BY: [] DATE: []
 DRAWING NUMBER: [] REV: A
 PLOT: A, 1=65 **K42 - P&P SHEET 8/16** REV: []



310-NEW STA=423+95 HT=83.00 ELE=316.47 BK-TO-BK DAVIT SUSP	311-NEW STA=426+85 HT=69.50 ELE=329.19 BK-TO-BK DAVIT SUSP	312-NEW STA=429+70 HT=74.00 ELE=332.96 BK-TO-BK DAVIT SUSP	313-NEW STA=434+62 HT=74.00 ELE=319.88 BK-TO-BK DAVIT SUSP	314-NEW STA=438+06 HT=74.00 ELE=329.42 BK-TO-BK DAVIT SUSP	315-NEW STA=442+51 HT=67.94 ELE=327.67 2-POLE IN-LINE DE	316-NEW STA=446+17 HT=74.00 ELE=317.38 DELTA BP	317-NEW STA=449+40 HT=69.50 ELE=326.45 DELTA BP	318-NEW STA=452+18 HT=75.33 ELE=333.41 OFFSET ADJUST=7.00 SMALL RA BP	319-NEW STA=454+70 HT=78.15 ELE=353.32 OFFSET ADJUST=6.00 SMALL RA SUSP	320-NEW STA=457+35 HT=67.50 ELE=305.11 SMALL RA BP	321-NEW STA=460+21 HT=74.00 ELE=290.77 BK-TO-BK DAVIT SUSP	322-NEW STA=466+50 HT=78.50 ELE=226.55 BK-TO-BK DAVIT SUSP	323-NEW STA=469+57 HT=83.00 ELE=198.57 BK-TO-BK DAVIT SUSP	324-NEW STA=474+03 HT=87.50 ELE=188.00 BK-TO-BK DAVIT SUSP	325-NEW STA=477+41 HT=83.00 ELE=188.26 BK-TO-BK DAVIT SUSP
---	---	---	---	---	---	--	--	---	---	---	---	---	---	---	---



200.0 FT. HORIZ. SCALE

40.0 FT. VERT. SCALE

NORTH

DRAFT
PRELIMINARY - FOR FILING PURPOSES ONLY
THIS DRAWING IS PRELIMINARY AND NOT
TO BE USED FOR CONSTRUCTION OR
PROCUREMENT OF MATERIAL

NOTE: HEIGHT AND ELEVATION DATA FROM ALIGNMENT CENTERLINE, NOT POLE LOCATION.

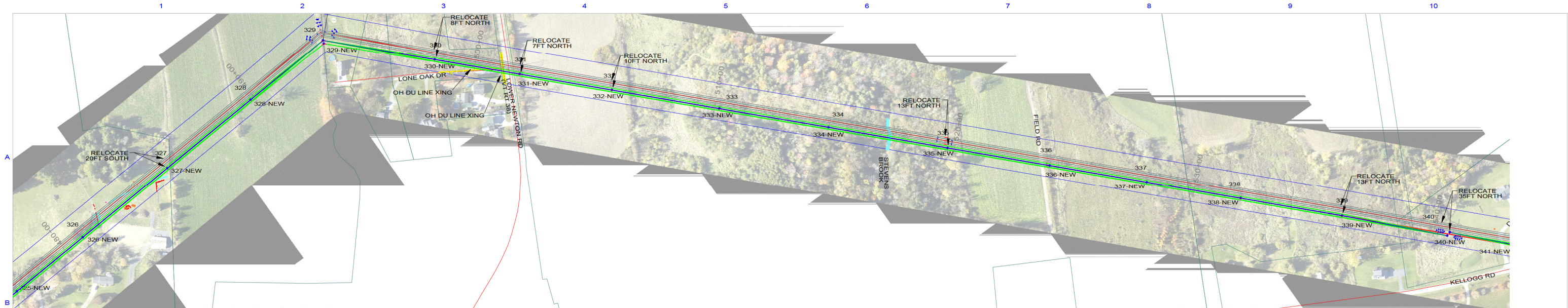
OPGW, 293-NEW - 315-NEW, 1KV, OPGW S 144U (3X48) 15.8MM 118KA2-S 82KN 1-917_3850LB.WIR, RULING SPAN 400 (FT), DISPLAYED -20 DEG F INITIAL FE	K42-NEW, 293-NEW - 315-NEW, 110KV, BITTERN, ACSR.WIR, RULING SPAN 400 (FT), 3 PHASES, BUNDLE OF 2, DISPLAYED MOT (HTC-573FT RS) MAX SAG FE
COMMUNICATION WIRES, 309-NEW - 315-NEW, 1KV, DNA-32763.WIR, RULING SPAN 447 (FT), 2 PHASES, DISPLAYED 32 DEG F 1/2" ICE MAX SAG 1381 (LBS)	OPGW, 315-NEW - 329-NEW, 1KV, OPGW S 144U (3X48) 15.8MM 118KA2-S 82KN 1-917_3850LB.WIR, RULING SPAN 404 (FT), DISPLAYED -20 DEG F INITIAL FE
K42-NEW, 315-NEW - 329-NEW, 110KV, BITTERN, ACSR.WIR, RULING SPAN 404 (FT), 3 PHASES, BUNDLE OF 2, DISPLAYED MOT (HTC-573FT RS) MAX SAG FE	COMMUNICATION WIRES, 315-NEW - 329-NEW, 1KV, DNA-32763.WIR, RULING SPAN 404 (FT), 2 PHASES, DISPLAYED 32 DEG F 1/2" ICE MAX SAG 1316 (LBS)

VELCO VERMONT ELECTRIC POWER CO., INC.
 RUTLAND, VERMONT
 GEORGIA TO ST. ALBANS TO HIGHGATE

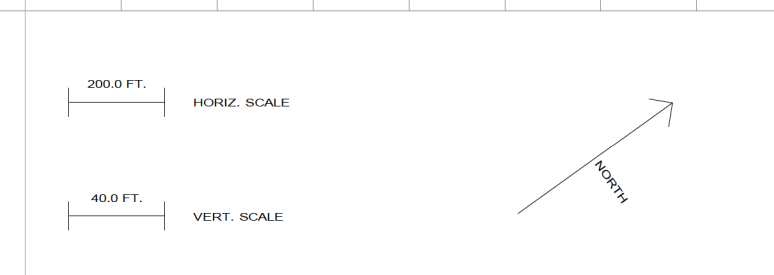
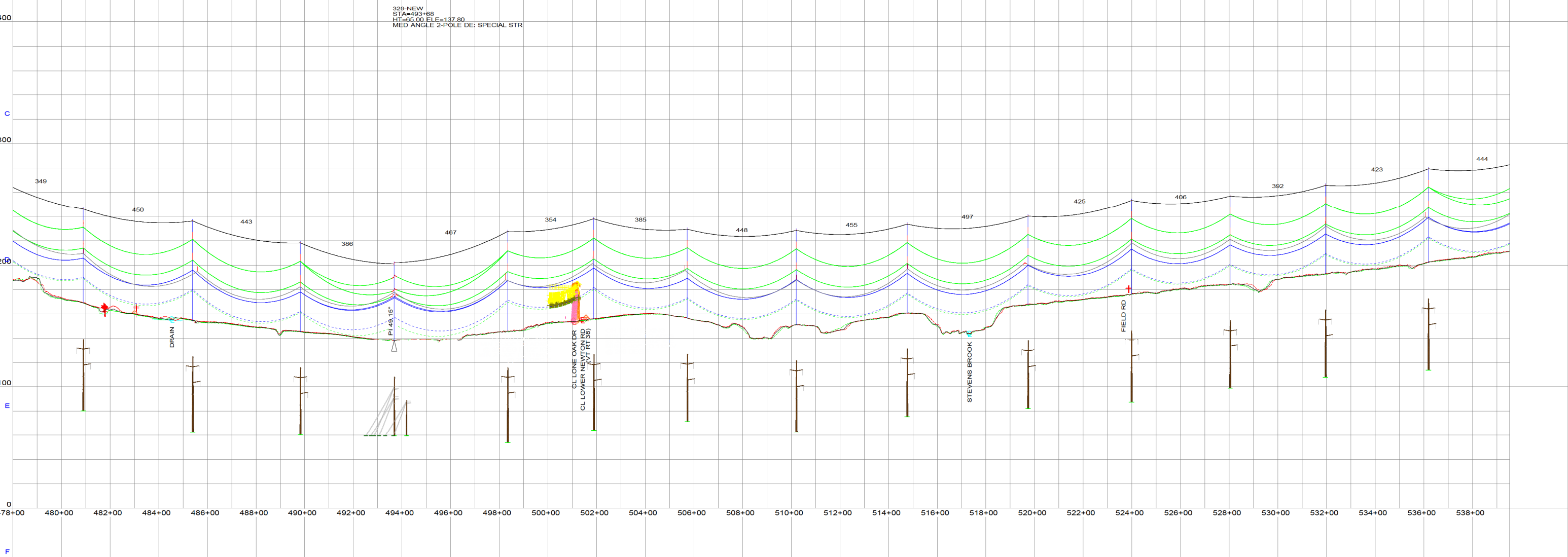
K42
115KV TRANSMISSION LINE

SCALE: AS NOTED DRAWN BY: GRBW APPROVED BY: []
 DATE: 5/31/2023 CHECKED BY: [] DATE: []
 DRAWING NUMBER: [] A
 PLOT: A, 1=65 **K42 - P&P SHEET 9/16** REV: [] FILE: F1

REV	DATE	DR	CK	A	5/31/23	GRW	ISSUED FOR FILING
-----	------	----	----	---	---------	-----	-------------------



325-NEW STA=480+00 HT=78.90 ELE=168.83 BK-TO-BK DAVIT SUSP	326-NEW STA=485+30 HT=83.00 ELE=154.46 BK-TO-BK DAVIT SUSP	327-NEW STA=486+82 HT=74.00 ELE=145.46 BK-TO-BK DAVIT SUSP	328-NEW STA=493+68 HT=65.00 ELE=137.80 MED ANGLE 2-POLE DE: SPECIAL STR	329-NEW STA=498+34 HT=83.00 ELE=145.78 BK-TO-BK DAVIT SUSP	330-NEW STA=501+88 HT=83.00 ELE=156.20 BK-TO-BK DAVIT SUSP	331-NEW STA=505+72 HT=74.00 ELE=156.62 BK-TO-BK DAVIT SUSP	332-NEW STA=510+21 HT=78.50 ELE=151.17 BK-TO-BK DAVIT SUSP	333-NEW STA=514+76 HT=74.00 ELE=160.77 BK-TO-BK DAVIT SUSP	334-NEW STA=519+73 HT=74.00 ELE=167.42 BK-TO-BK DAVIT SUSP	335-NEW STA=523+08 HT=78.50 ELE=176.13 BK-TO-BK DAVIT SUSP	336-NEW STA=528+04 HT=74.00 ELE=184.15 BK-TO-BK DAVIT SUSP	337-NEW STA=531+05 HT=74.00 ELE=193.01 BK-TO-BK DAVIT SUSP	338-NEW STA=536+10 HT=78.50 ELE=202.11 BK-TO-BK DAVIT SUSP	339-NEW STA=541+10 HT=78.50 ELE=202.11 BK-TO-BK DAVIT SUSP
---	---	---	--	---	---	---	---	---	---	---	---	---	---	---



DRAFT
PRELIMINARY - FOR FILING PURPOSES ONLY
THIS DRAWING IS PRELIMINARY AND NOT
TO BE USED FOR CONSTRUCTION OR
PROCUREMENT OF MATERIAL

NOTE: HEIGHT AND ELEVATION DATA FROM ALIGNMENT CENTERLINE, NOT POLE LOCATION.

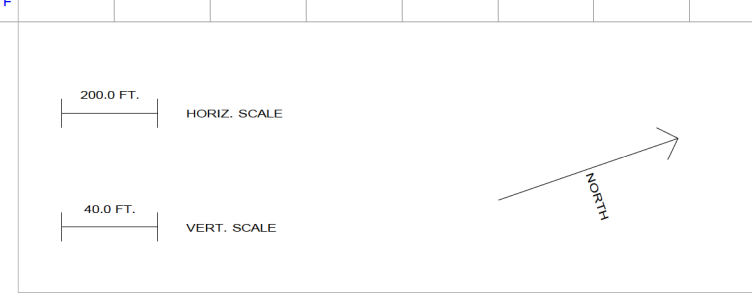
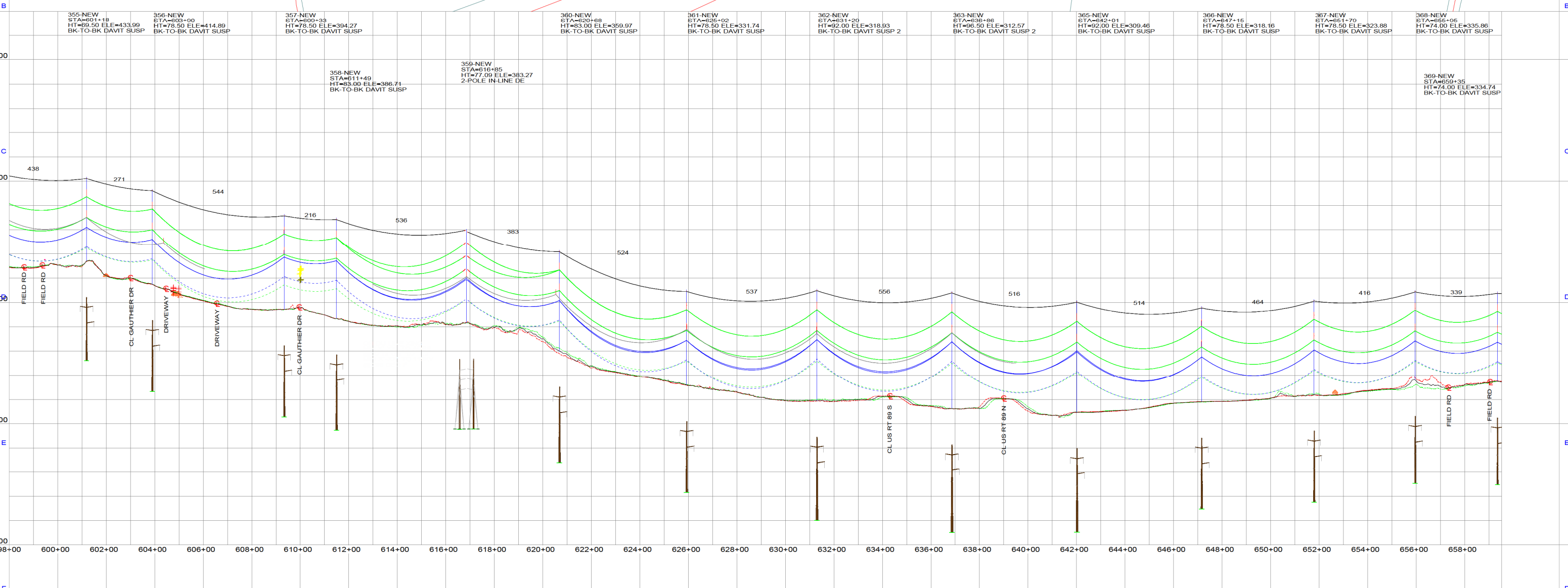
OPGW, 315-NEW - 329-NEW, 1KV, OPGW S 144U (3X48) 15.8MM 118KA2-S 82KN 1-917_3850LB.WIR, RULING SPAN 404 (FT), DISPLAYED -20 DEG F INITIAL FE	K42-NEW, 315-NEW - 329-NEW, 110KV, BITTERN, ACSR.WIR, RULING SPAN 404 (FT), 3 PHASES, BUNDLE OF 2, DISPLAYED MOT (HTC-573FT RS) MAX SAG FE
COMMUNICATION WIRES, 315-NEW - 329-NEW, 1KV, DNA-32763.WIR, RULING SPAN 404 (FT), 2 PHASES, DISPLAYED 32 DEG F 1/2" ICE MAX SAG 1316 (LBS)	OPGW, 329-NEW - 340-NEW, 1KV, OPGW S 144U (3X48) 15.8MM 118KA2-S 82KN 1-917_3875LB.WIR, RULING SPAN 431 (FT), DISPLAYED -20 DEG F INITIAL FE
K42-NEW, 329-NEW - 340-NEW, 110KV, BITTERN, ACSR.WIR, RULING SPAN 431 (FT), 3 PHASES, BUNDLE OF 2, DISPLAYED MOT (HTC-573FT RS) MAX SAG FE	COMMUNICATION WIRES, 329-NEW - 340-NEW, 1KV, DNA-32763.WIR, RULING SPAN 431 (FT), 2 PHASES, DISPLAYED 32 DEG F 1/2" ICE MAX SAG 1338 (LBS)

REV	DATE	DR	CK
A	5/31/23	GRW	
			ISSUED FOR FILING

VELCO VERMONT ELECTRIC POWER CO., INC.
 RUTLAND, VERMONT
 GEORGIA TO ST. ALBANS TO HIGHGATE

K42
115KV TRANSMISSION LINE


SCALE: AS NOTED	DRAWN BY: GRBW	APPROVED BY:
DATE: 5/31/2023	CHECKED BY:	DATE:
DRAWING NUMBER:	K42 - P&P SHEET 10/16	
PLOT: A, 1=65	REV	FILE: A



DRAFT
PRELIMINARY - FOR FILING PURPOSES ONLY
THIS DRAWING IS PRELIMINARY AND NOT
TO BE USED FOR CONSTRUCTION OR
PROCUREMENT OF MATERIAL

NOTE: HEIGHT AND ELEVATION DATA FROM ALIGNMENT CENTERLINE, NOT POLE LOCATION.

OPGW, 340-NEW - 359-NEW, 1KV, OPGW S 144U (3X48) 15.8MM 118KA2-S 82KN 1-917, 3975LB.WIR, RULING SPAN 449 (FT), DISPLAYED -20 DEG F INITIAL FE
K42-NEW, 340-NEW - 359-NEW, 110KV, BITTERN, ACSR.WIR, RULING SPAN 449 (FT), 3 PHASES, BUNDLE OF 2, DISPLAYED MOT (HTC-573FT RS) MAX SAG FE
COMMUNICATION WIRES, 351-NEW - 359-NEW, 1KV, DNA-32763.WIR, RULING SPAN 464 (FT), 2 PHASES, DISPLAYED 32 DEG F 1/2" ICE MAX SAG 1319 (LBS)
OPGW, 359-NEW - 382-NEW, 1KV, OPGW S 144U (3X48) 15.8MM 118KA2-S 82KN 1-917, 3975LB.WIR, RULING SPAN 467 (FT), DISPLAYED -20 DEG F INITIAL FE
K42-NEW, 359-NEW - 382-NEW, 110KV, BITTERN, ACSR.WIR, RULING SPAN 467 (FT), 3 PHASES, BUNDLE OF 2, DISPLAYED MOT (HTC-573FT RS) MAX SAG FE
COMMUNICATION WIRES, 359-NEW - 365-NEW, 1KV, DNA-32763.WIR, RULING SPAN 513 (FT), DISPLAYED 32 DEG F 1/2" ICE MAX SAG 1297 (LBS)
OPGW, 365-NEW - 382-NEW, 1KV, OPGW S 144U (3X48) 15.8MM 118KA2-S 82KN 1-917, 3975LB.WIR, RULING SPAN 450 (FT), DISPLAYED -20 DEG F INITIAL FE
COMMUNICATION WIRES, 365-NEW - 382-NEW, 1KV, DNA-32763.WIR, RULING SPAN 450 (FT), 2 PHASES, DISPLAYED 32 DEG F 1/2" ICE MAX SAG 1310 (LBS)



VERMONT ELECTRIC POWER CO., INC.
RUTLAND, VERMONT
GEORGIA TO ST. ALBANS TO HIGHGATE

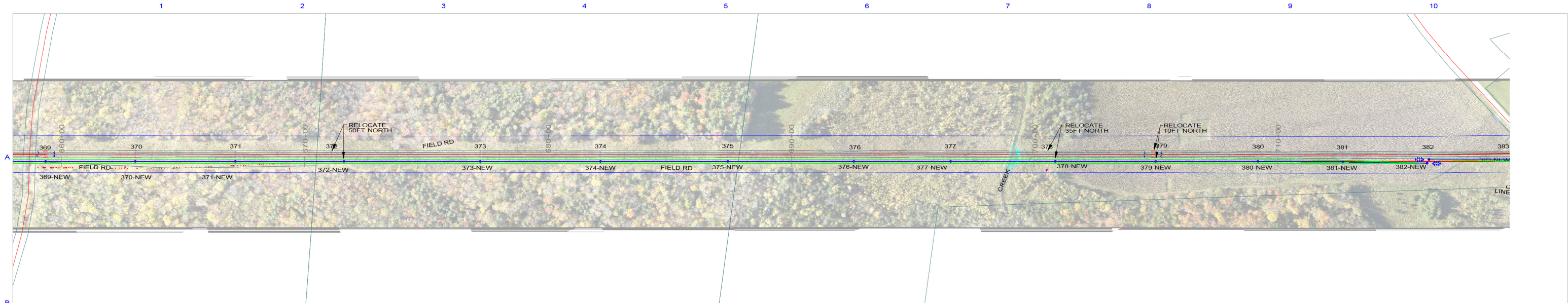
K42
115KV TRANSMISSION LINE

SCALE: AS NOTED DRAWN BY: GRBW APPROVED BY: _____

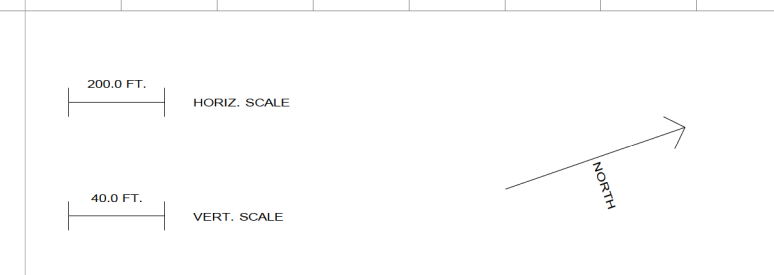
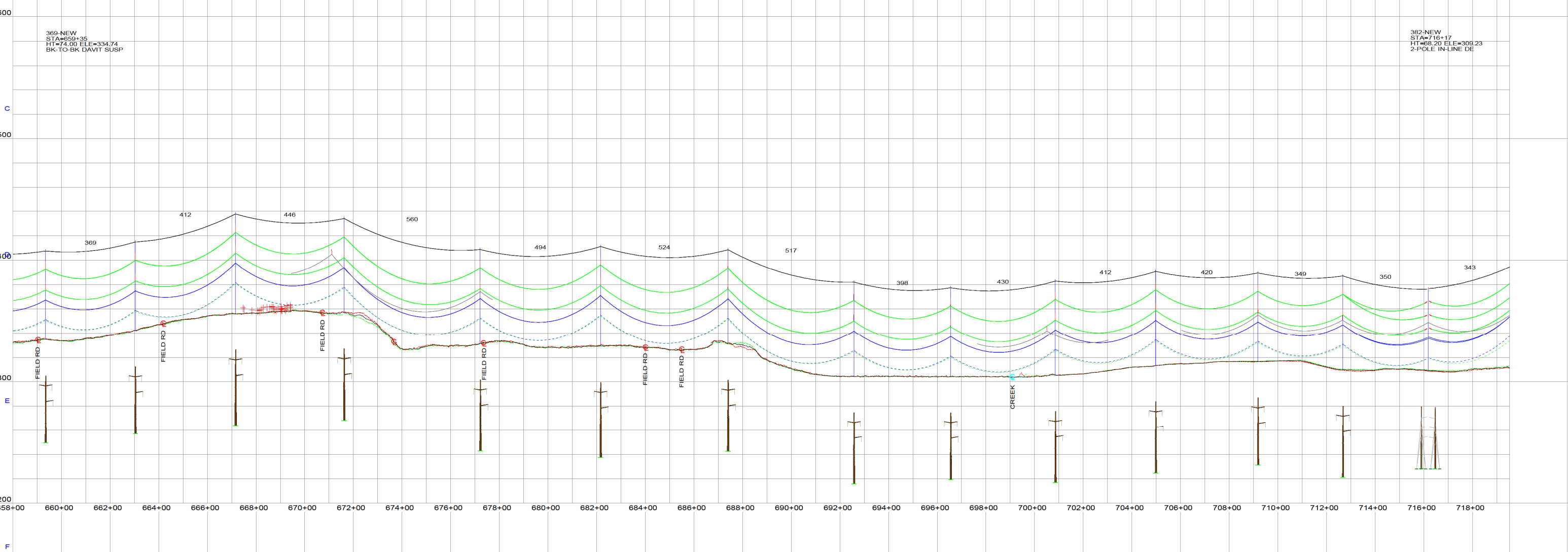
DATE: 5/31/2023 CHECKED BY: _____ DATE: _____

DRAWING NUMBER: _____ A _____

PLOT: A, 1=65 **K42 - P&P SHEET 12/16** REV _____



369-NEW STA=659+35 HT=74.00 ELE=334.74 BK-TO-BK DAVIT SUSP	370-NEW STA=663+04 HT=74.00 ELE=342.14 BK-TO-BK DAVIT SUSP	371-NEW STA=667+15 HT=83.00 ELE=356.00 BK-TO-BK DAVIT SUSP 2	372-NEW STA=671+62 HT=78.50 ELE=356.83 BK-TO-BK DAVIT SUSP 2	373-NEW STA=677+22 HT=78.50 ELE=331.41 BK-TO-BK DAVIT SUSP	374-NEW STA=682+16 HT=83.00 ELE=329.41 BK-TO-BK DAVIT SUSP	375-NEW STA=687+40 HT=78.50 ELE=331.25 BK-TO-BK DAVIT SUSP 2	376-NEW STA=692+57 HT=78.50 ELE=304.64 BK-TO-BK DAVIT SUSP	377-NEW STA=696+55 HT=74.00 ELE=304.55 BK-TO-BK DAVIT SUSP	378-NEW STA=700+85 HT=78.50 ELE=305.53 BK-TO-BK DAVIT SUSP	379-NEW STA=704+08 HT=78.50 ELE=313.47 BK-TO-BK DAVIT SUSP	380-NEW STA=708+18 HT=74.00 ELE=316.69 BK-TO-BK DAVIT SUSP	381-NEW STA=712+67 HT=78.40 ELE=309.85 OFFSET ADJUST=2.00 BK-TO-BK DAVIT SUSP	382-NEW STA=716+17 HT=68.20 ELE=309.23 2-POLE IN-LINE DE
---	---	---	---	---	---	---	---	---	---	---	---	---	---



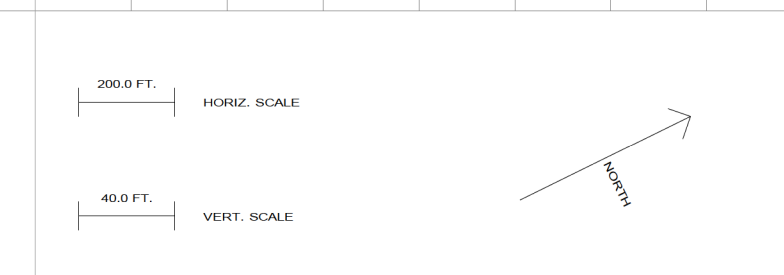
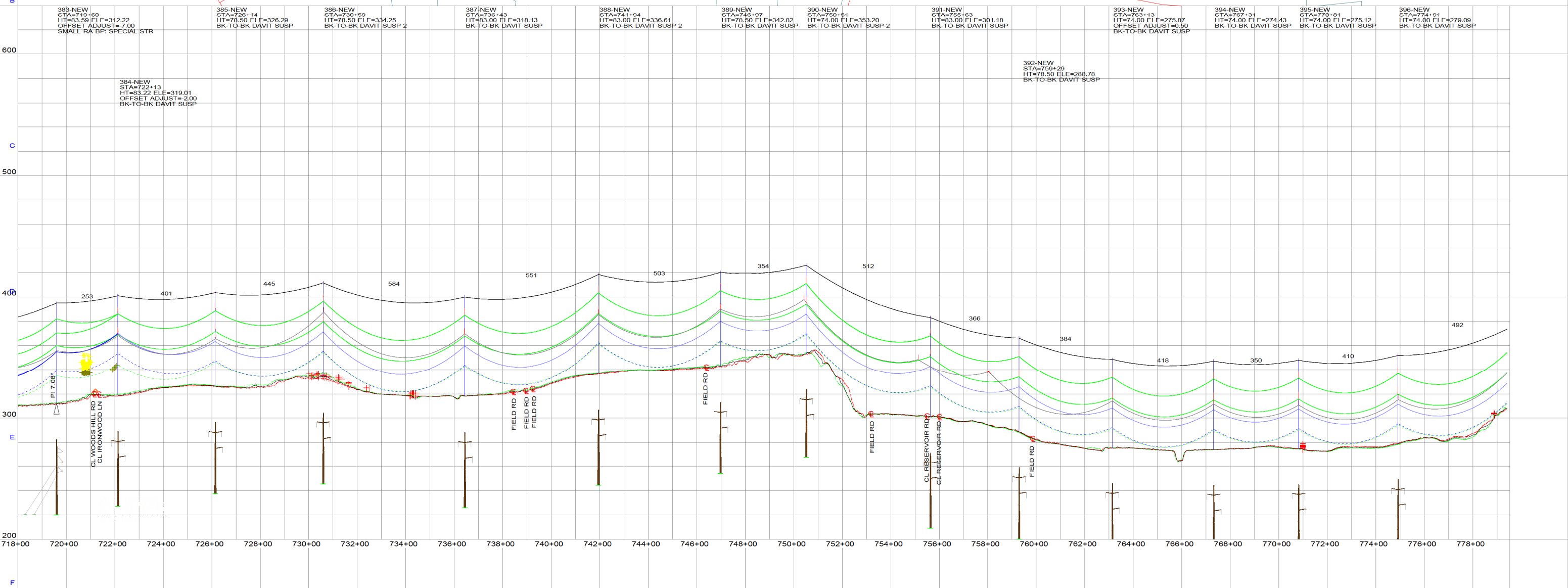
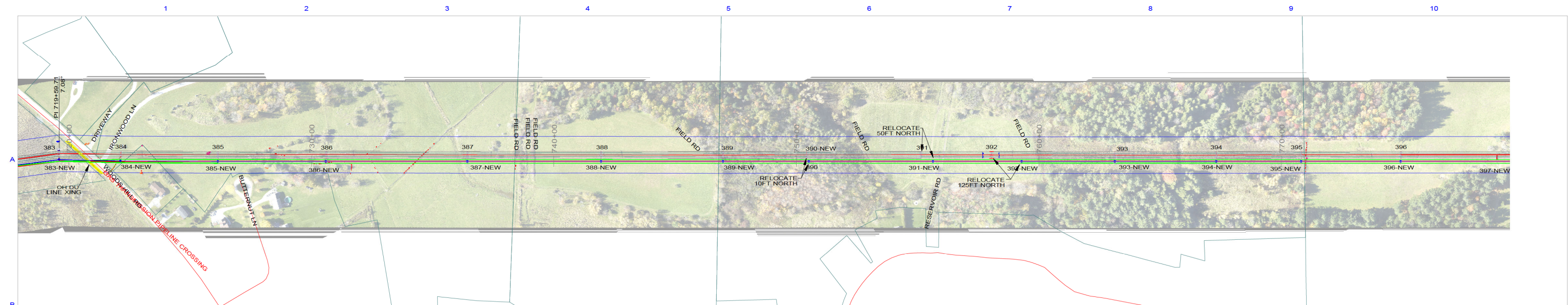
DRAFT
PRELIMINARY - FOR FILING PURPOSES ONLY
THIS DRAWING IS PRELIMINARY AND NOT
TO BE USED FOR CONSTRUCTION OR
PROCUREMENT OF MATERIAL

NOTE: HEIGHT AND ELEVATION DATA FROM ALIGNMENT CENTERLINE, NOT POLE LOCATION.

OPGW, 359-NEW - 382-NEW, 1KV, OPGW S 144U (3X48) 15.8MM 118KA2-S 82KN 1-917, 3975LB.WIR, RULING SPAN 467 (FT), DISPLAYED -20 DEG F INITIAL FE
K42-NEW, 359-NEW - 382-NEW, 110KV, BITTERN, ACSR.WIR, RULING SPAN 467 (FT), 3 PHASES, BUNDLE OF 2, DISPLAYED MOT (HTC-573FT RS) MAX SAG FE
COMMUNICATION WIRES, 365-NEW - 382-NEW, 1KV, DNA-32763.WIR, RULING SPAN 459 (FT), 2 PHASES, DISPLAYED 32 DEG F 1/2" ICE MAX SAG 1310 (LBS)
OPGW, 382-NEW - 399-NEW, 1KV, OPGW S 144U (3X48) 15.8MM 118KA2-S 82KN 1-917, 3960LB.WIR, RULING SPAN 446 (FT), DISPLAYED -20 DEG F INITIAL FE
K42-NEW, 382-NEW - 399-NEW, 110KV, BITTERN, ACSR.WIR, RULING SPAN 446 (FT), 3 PHASES, BUNDLE OF 2, DISPLAYED MOT (HTC-573FT RS) MAX SAG FE
COMMUNICATION WIRES, 382-NEW - 384-NEW, 1KV, DNA-32763.WIR, RULING SPAN 304 (FT), 2 PHASES, DISPLAYED 32 DEG F 1/2" ICE MAX SAG 1154 (LBS)

VELCO		VERMONT ELECTRIC POWER CO., INC.	
		RUTLAND, VERMONT	
		GEORGIA TO ST. ALBANS TO HIGHGATE	
		K42	
		115KV TRANSMISSION LINE	
SCALE: AS NOTED	DRAWN BY: GRBW	APPROVED BY:	
DATE: 5/31/2023	CHECKED BY:		DATE
DRAWING NUMBER:	K42 - P&P SHEET 13/16		REV
PLOT: A, 1=65			FILE:F\

A	5/31/23	GRW	ISSUED FOR FILING
REV	DATE	DR	CK



DRAFT
PRELIMINARY - FOR FILING PURPOSES ONLY
 THIS DRAWING IS PRELIMINARY AND NOT
 TO BE USED FOR CONSTRUCTION OR
 PROCUREMENT OF MATERIAL

NOTE: HEIGHT AND ELEVATION DATA FROM ALIGNMENT
 CENTERLINE, NOT POLE LOCATION.

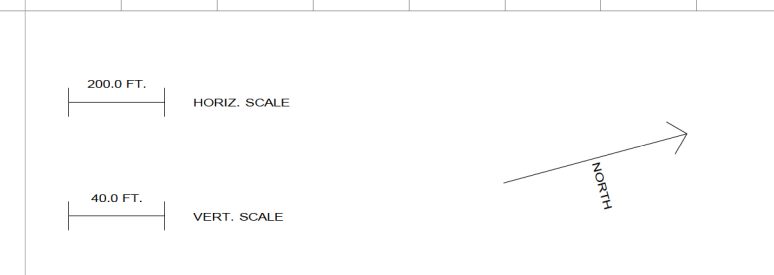
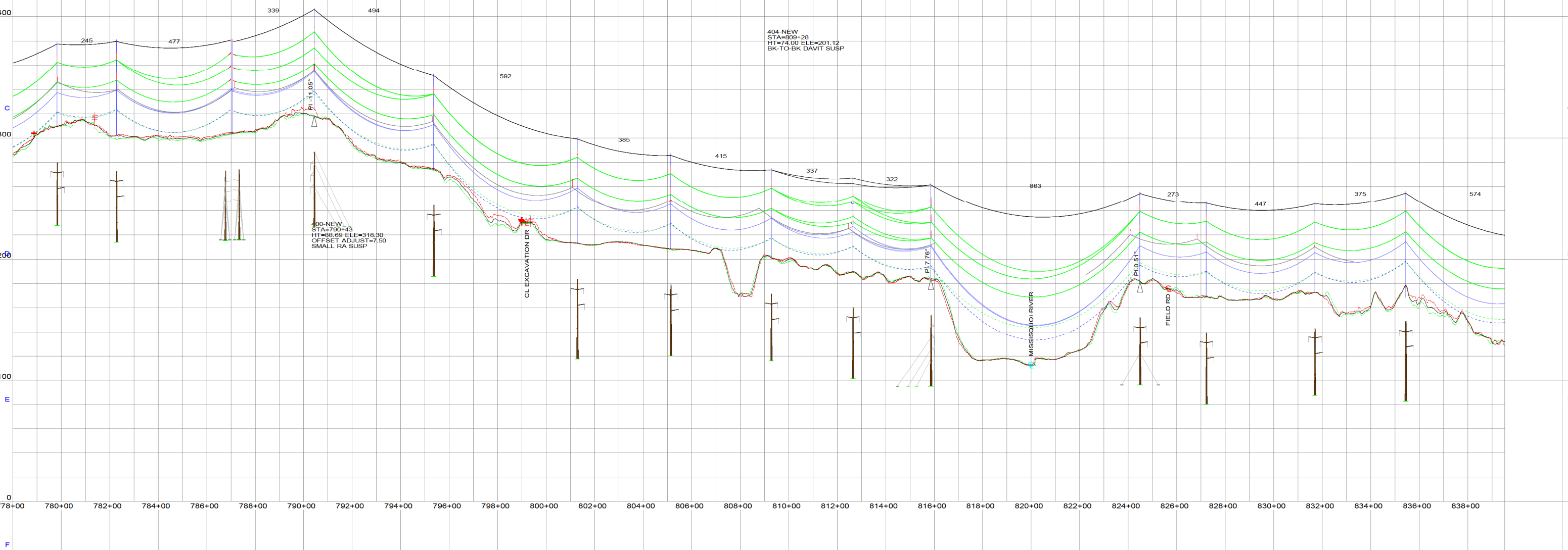
OPGW, 382-NEW - 399-NEW, 1KV, OPGW S 144U (3X48) 15.8MM 118KA2-S 82KN 1-917, 3960LB.WIR, RULING SPAN 446 (FT), DISPLAYED -20 DEG F INITIAL FE K42-NEW, 382-NEW - 389-NEW, 110KV, BITTERN, ACSR.WIR, RULING SPAN 446 (FT), 3 PHASES, BUNDLE OF 2, DISPLAYED MOT (HTC-573 FT RS) MAX SAG FE COMMUNICATION WIRES, 382-NEW - 384-NEW, 1KV, DNA-32763.WIR, RULING SPAN 304 (FT), 2 PHASES, DISPLAYED 32 DEG F 1/2" ICE MAX SAG 1154 (LBS) 384-NEW - 389-NEW, 1KV, DNA-32763.WIR, RULING SPAN 457 (FT), 2 PHASES, DISPLAYED 32 DEG F 1/2" ICE MAX SAG 1259 (LBS)			
REV	DATE	DR	CK
A	5/31/23	GRW	
			ISSUED FOR FILING

		VERMONT ELECTRIC POWER CO., INC. RUTLAND, VERMONT GEORGIA TO ST. ALBANS TO HIGHGATE	
		K42 115KV TRANSMISSION LINE	
SCALE: AS NOTED	DRAWN BY: GRBW	APPROVED BY:	
DATE: 5/31/2023	CHECKED BY:		DATE
DRAWING NUMBER:	K42 - P&P SHEET 14/16		A
PLOT: A, 1=65			REV

FILE:F:\



397-NEW STA=779+83 HT=69.50 ELE=309.44 BK-TO-BK DAVIT SUSP	398-NEW STA=782+28 HT=78.50 ELE=302.48 BK-TO-BK DAVIT SUSP	399-NEW STA=787+05 HT=77.88 ELE=303.84 2-POLE IN-LINE DE	401-NEW STA=795+36 HT=78.50 ELE=274.15 BK-TO-BK DAVIT SUSP	402-NEW STA=801+28 HT=87.50 ELE=212.99 BK-TO-BK DAVIT SUSP	403-NEW STA=806+13 HT=78.50 ELE=208.52 BK-TO-BK DAVIT SUSP	405-NEW STA=812+64 HT=78.50 ELE=189.81 BK-TO-BK DAVIT SUSP OFFSET ADJUST=7.50 SMALL RA SUSP: SPECIAL STR	406-NEW STA=815+96 HT=78.80 ELE=183.79 BK-TO-BK DAVIT SUSP	407-NEW STA=824+48 HT=74.00 ELE=181.55 BK-TO-BK DAVIT SUSP 2	408-NEW STA=827+22 HT=78.50 ELE=168.95 BK-TO-BK DAVIT SUSP	409-NEW STA=831+60 HT=74.00 ELE=172.88 BK-TO-BK DAVIT SUSP	410-NEW STA=835+44 HT=77.50 ELE=178.40 BK-TO-BK DAVIT SUSP 2
---	---	---	---	---	---	--	---	---	---	---	---



DRAFT
PRELIMINARY - FOR FILING PURPOSES ONLY
THIS DRAWING IS PRELIMINARY AND NOT
TO BE USED FOR CONSTRUCTION OR
PROCUREMENT OF MATERIAL

NOTE: HEIGHT AND ELEVATION DATA FROM ALIGNMENT CENTERLINE, NOT POLE LOCATION.

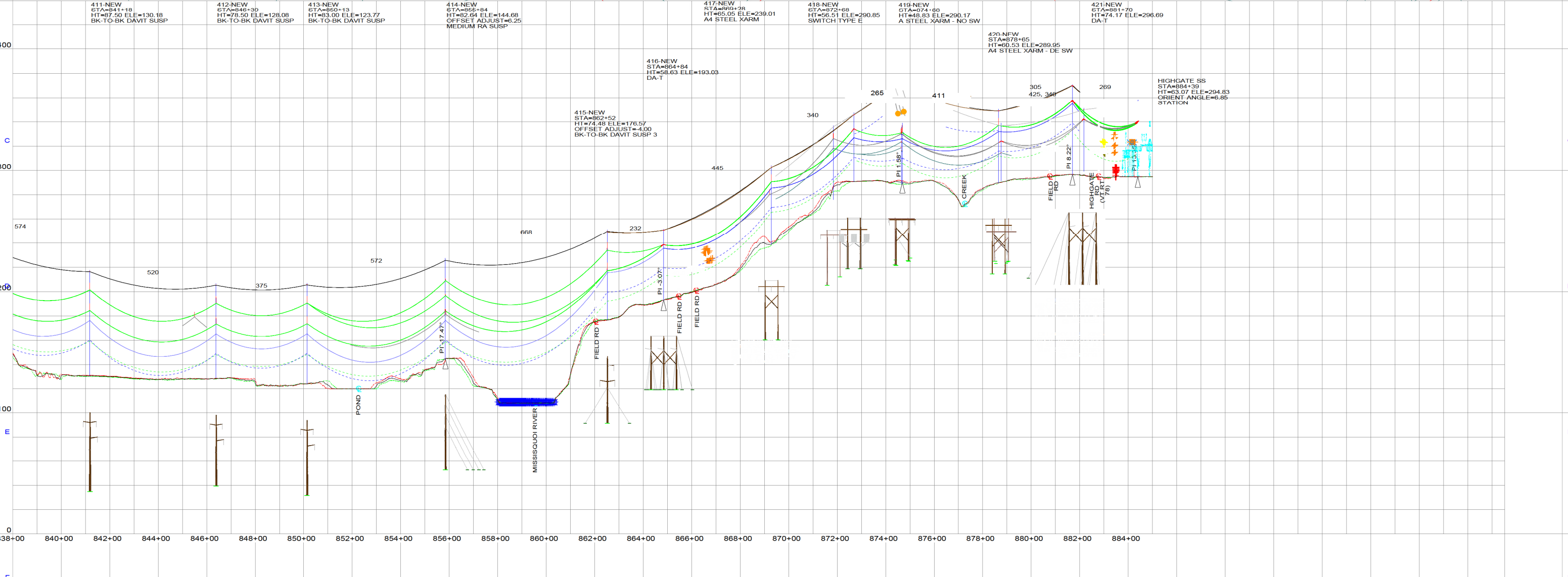
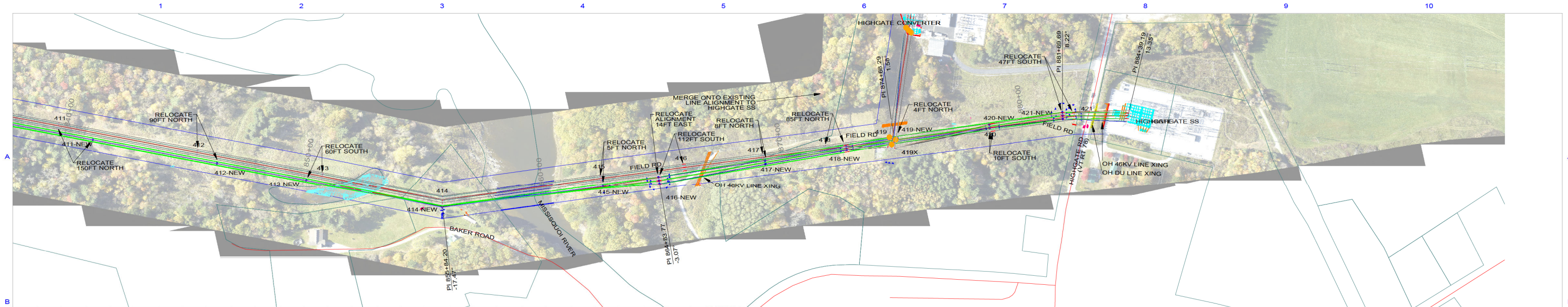
OPGW, 382-NEW - 399-NEW, 1KV, OPGW S 144U (3X48) 15.8MM 118KA2-S 82KN 1-917, 3960LB.WIR, RULING SPAN 446 (FT), DISPLAYED -20 DEG F INITIAL FE	K42-NEW, 382-NEW - 399-NEW, 110KV, BITTERN, ACSR.WIR, RULING SPAN 446 (FT), 3 PHASES, BUNDLE OF 2, DISPLAYED MOT (HTC-573FT RS) MAX SAG FE
399-NEW - 399-NEW, 1KV, DNA-32763.WIR, RULING SPAN 457 (FT), 2 PHASES, DISPLAYED 32 DEG F 1/2" ICE MAX SAG 1299 (LBS)	OPGW, 399-NEW - 416-NEW, 1KV, OPGW S 144U (3X48) 15.8MM 118KA2-S 82KN 1-917, 4160LB.WIR, RULING SPAN 537 (FT), DISPLAYED -20 DEG F INITIAL FE
K42-NEW, 399-NEW - 416-NEW, 110KV, BITTERN, ACSR.WIR, RULING SPAN 537 (FT), 3 PHASES, BUNDLE OF 2, DISPLAYED MOT (HTC-573FT RS) MAX SAG FE	399-NEW - 416-NEW, 1KV, DNA-32763.WIR, RULING SPAN 537 (FT), 2 PHASES, DISPLAYED 32 DEG F 1/2" ICE MAX SAG 1207 (LBS)

REV	DATE	DR	CK
A	5/31/23	GRW	

VERMONT ELECTRIC POWER CO., INC.
RUTLAND, VERMONT
GEORGIA TO ST. ALBANS TO HIGHGATE

K42
115KV TRANSMISSION LINE

SCALE: AS NOTED DRAWN BY: GRBW APPROVED BY: []
 DATE: 5/31/2023 CHECKED BY: [] DATE: []
 DRAWING NUMBER: [] REV: A
 PLOT: A, 1=65 **K42 - P&P SHEET 15/16** REV: []



411-NEW STA=841+18 HT=87.50 ELE=130.18 BK-TO-BK DAVIT SUSP	412-NEW STA=843+30 HT=78.50 ELE=128.08 BK-TO-BK DAVIT SUSP	413-NEW STA=850+13 HT=83.00 ELE=123.77 BK-TO-BK DAVIT SUSP	414-NEW STA=865+84 HT=82.64 ELE=144.68 OFFSET ADJUST=6.25 MEDIUM RA SUSP	417-NEW STA=869+28 HT=65.05 ELE=239.01 A4 STEEL XARM	418-NEW STA=872+68 HT=65.51 ELE=290.85 SWITCH TYPE E	419-NEW STA=874+60 HT=48.83 ELE=290.17 A STEEL XARM - NO SW	421-NEW STA=881+70 HT=74.17 ELE=296.69 DA-T
---	---	---	--	---	---	--	--

415-NEW STA=862+52 HT=74.48 ELE=176.57 OFFSET ADJUST=4.00 BK-TO-BK DAVIT SUSP 3	416-NEW STA=864+84 HT=58.63 ELE=193.03 DA-T	420-NEW STA=878+65 HT=60.53 ELE=289.65 A4 STEEL XARM - DE SW	HIGHGATE SS STA=884+39 HT=63.07 ELE=294.83 ORIENT ANGLE=6.85 STATION
---	--	---	--

DRAFT
PRELIMINARY - FOR FILING PURPOSES ONLY
THIS DRAWING IS PRELIMINARY AND NOT
TO BE USED FOR CONSTRUCTION OR
PROCUREMENT OF MATERIAL

- OPGW, 399-NEW - 416-NEW, 1KV, OPGW S 144U (3X48) 15.8MM 118KA2-S 82KN 1-917 4160LB.WIR, RULING SPAN 537 (FT), DISPLAYED -20 DEG F INITIAL FE
- K42-NEW, 399-NEW - 416-NEW, 116KV, BITTERN, ACSR.WIR, RULING SPAN 537 (FT), 3 PHASES, BUNDLE OF 2, DISPLAYED MOT (HTC-573FT RS) MAX SAG FE
- OHGW, 415-NEW - 416-NEW, 1KV, DNA-32763.WIR, RULING SPAN 537 (FT), 2 PHASES, DISPLAYED 32 DEG F 1/2" ICE MAX SAG 1287 (LBS)
- OPGW, 415-NEW - 416-NEW, 1KV, 3 8-7 STRAND EHS STEEL 2250LB.WIR, RULING SPAN 231 (FT), DISPLAYED -20 DEG F INITIAL FE
- OPGW, 416-NEW - 418-NEW, 1KV, OPGW S 144U (3X48) 15.8MM 118KA2-S 82KN 1-917 3790LB.WIR, RULING SPAN 399 (FT), DISPLAYED -20 DEG F INITIAL FE
- OHGW, 416-NEW - 418-NEW, 1KV, 3 8-7 STRAND EHS STEEL 2725LB.WIR, RULING SPAN 399 (FT), DISPLAYED -20 DEG F INITIAL FE
- K42-NEW, 416-NEW - 418-NEW, 116KV, BITTERN, ACSR.WIR, RULING SPAN 399 (FT), 3 PHASES, BUNDLE OF 2, DISPLAYED MOT (HTC-573FT RS) MAX SAG FE
- COMMUNICATION WIRES, 416-NEW - 418-NEW, 1KV, DNA-32763.WIR, RULING SPAN 399 (FT), 2 PHASES, DISPLAYED 32 DEG F 1/2" ICE MAX SAG 1326 (LBS)
- OPGW, 418-NEW - 419X, 1KV, OPGW S 144U (3X48) 15.8MM 118KA2-S 82KN 1-917 2675LB.WIR, RULING SPAN 168 (FT), DISPLAYED -20 DEG F INITIAL FE
- OHGW, 418-NEW - 419X, 1KV, 3 8-7 STRAND EHS STEEL 1800LB.WIR, RULING SPAN 168 (FT), DISPLAYED -20 DEG F INITIAL FE
- K42-NEW, 418-NEW - 421-NEW, 116KV, BITTERN, ACSR.WIR, RULING SPAN 331 (FT), 3 PHASES, BUNDLE OF 2, DISPLAYED MOT (HTC-573FT RS) MAX SAG FE
- COMMUNICATION WIRES, 418-NEW - 419-NEW, 1KV, DNA-32763.WIR, RULING SPAN 198 (FT), 2 PHASES, DISPLAYED 32 DEG F 1/2" ICE MAX SAG 1517 (LBS)
- COMMUNICATION WIRES, 419-NEW - 421-NEW, 1KV, DNA-32763.WIR, RULING SPAN 368 (FT), DISPLAYED 32 DEG F 1/2" ICE MAX SAG 1361 (LBS)
- OPGW, 420-NEW - 421-NEW, 1KV, OPGW S 144U (3X48) 15.8MM 118KA2-S 82KN 1-917 3475LB.WIR, RULING SPAN 302 (FT), DISPLAYED -20 DEG F INITIAL FE
- OHGW, 420-NEW - 421-NEW, 1KV, 3 8-7 STRAND EHS STEEL 2400LB.WIR, RULING SPAN 304 (FT), DISPLAYED -20 DEG F INITIAL FE
- OPGW, 421-NEW - HIGHGATE SS, 1KV, OPGW S 144U (3X48) 15.8MM 118KA2-S 82KN 1-917 3790LB.WIR, RULING SPAN 275 (FT), DISPLAYED -20 DEG F INITIAL FE
- OHGW, 421-NEW - HIGHGATE SS, 1KV, 3 8-7 STRAND EHS STEEL 1100LB.WIR, RULING SPAN 275 (FT), DISPLAYED -20 DEG F INITIAL FE
- OPGW, 421-NEW - HIGHGATE SS, 1KV, OPGW S 144U (3X48) 15.8MM 118KA2-S 82KN 1-917 1300LB.WIR, RULING SPAN 262 (FT), DISPLAYED -20 DEG F INITIAL FE
- K42-NEW, 421-NEW - HIGHGATE SS, 116KV, BITTERN, ACSR 3275LB-EXICE.WIR, RULING SPAN 268 (FT), 3 PHASES, BUNDLE OF 2, DISPLAYED MOT (HTC-573FT RS) MAX SAG FE
- COMMUNICATION WIRES, 421-NEW - HIGHGATE SS, 1KV, DNA-32763 900LB.WIR, RULING SPAN 261 (FT), DISPLAYED 32 DEG F 1/2" ICE MAX SAG 581 (LBS)
- OPGW, 419X - 420-NEW, 1KV, OPGW S 144U (3X48) 15.8MM 118KA2-S 82KN 1-917 3790LB.WIR, RULING SPAN 400 (FT), DISPLAYED -20 DEG F INITIAL FE
- OHGW, 419X - 420-NEW, 1KV, 3 8-7 STRAND EHS STEEL 2675LB.WIR, RULING SPAN 400 (FT), DISPLAYED -20 DEG F INITIAL FE

		VERMONT ELECTRIC POWER CO., INC.	
		RUTLAND, VERMONT	
		GEORGIA TO ST. ALBANS TO HIGHGATE	
		K42	
		115KV TRANSMISSION LINE	
SCALE: AS NOTED	DRAWN BY: GRBW	APPROVED BY:	
DATE: 5/31/2023	CHECKED BY:		DATE:
DRAWING NUMBER:	K42 - P&P SHEET 16/16		REV: A
PLOT: A, 1=65			FILE: F

NOTE: HEIGHT AND ELEVATION DATA FROM ALIGNMENT CENTERLINE, NOT POLE LOCATION.

REV	DATE	DR	CK